

Recombinant Human ALS2CR7 protein, GST-tagged

Cat. No. ALS2CR7-508H Lot. No. (See product label)

SPECIFICATION

Product Overview	Human ALS2CR7 full-length ORF (AAH38807.1, 1 a.a. - 349 a.a.) recombinant protein with GST-tag at N-terminal.
Species	Human
Source	Wheat Germ
Description	CDK15 (Cyclin Dependent Kinase 15) is a Protein Coding gene. GO annotations related to this gene include transferase activity, transferring phosphorus-containing groups and protein tyrosine kinase activity. An important paralog of this gene is CDK14.
Molecular Mass	66 kDa
AA Sequence	MTSFHPRGLQAARAQKFKSKRPRSNSDCFQEEDLRQGFQWRKSLPFGAASSYLNL EKLGEESYATVYKGISRINGQLVALKVISMNAEEGVPFTAIREASLLKGLKHANIVLLH DIIHTKETLTFVFEYMHTDLAQYMSQHPGGLHPHNVRLFMFQLLRGLAYIHHQHVLH RDLKPQNLLISHLGELKLADFGGLARAKSIPSQTYSSSEVVTLWYRPPDALLGATEYSSE LDIWGAGCIFIEMFQGQPLFPGVSNILEQLEKIWEVLGVPTEDTWPGVSKLPNYPNPE WFPLPTPRSLHVVVNRLGRVPEAEDLASQMLKGFPRDRVSAQEALVHDYFSALPS QLYQLPDE
Applications	Enzyme-linked Immunoabsorbent Assay; Western Blot (Recombinant protein); Antibody Production; Protein Array

 Tel: 1-631-559-9269 1-516-512-3133

 Email: info@creative-biomart.com  Fax: 1-631-938-8127

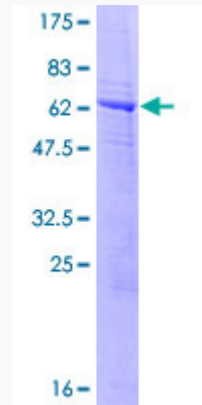
 45-1 Ramsey Road, Shirley, NY 11967, USA

Notes	Best use within three months from the date of receipt of this protein.
Storage	Store at -80 centigrade. Aliquot to avoid repeated freezing and thawing.
Storage Buffer	50 mM Tris-HCl, 10 mM reduced Glutathione, pH=8.0 in the elution buffer.
GENE INFORMATION	
Gene Name	CDK15 cyclin dependent kinase 15 [Homo sapiens (human)]
Official Symbol	CDK15
Synonyms	CDK15; cyclin dependent kinase 15; PFTK2; ALS2CR7; PFTAIRE2; cyclin-dependent kinase 15; PFTAIRE protein kinase 2; amyotrophic lateral sclerosis 2 (juvenile) chromosome region, candidate 7; amyotrophic lateral sclerosis 2 chromosomal region candidate gene 7 protein; cell division protein kinase 15; serine/threonine protein kinase; serine/threonine-protein kinase ALS2CR7; serine/threonine-protein kinase PFTAIRE-2; EC 2.7.11.22
Gene ID	65061
mRNA Refseq	NM_001261435
Protein Refseq	NP_001248364
MIM	616147
UniProt ID	Q96Q40

 Tel: 1-631-559-9269 1-516-512-3133

 Email: info@creative-biomart.com  Fax: 1-631-938-8127

 45-1 Ramsey Road, Shirley, NY 11967, USA



12.5% SDS-PAGE Stained with Coomassie Blue.

 Tel: 1-631-559-9269 1-516-512-3133

 Email: info@creative-biomart.com  Fax: 1-631-938-8127

 45-1 Ramsey Road, Shirley, NY 11967, USA