

## Recombinant Human ALS2CR8 protein, GST-tagged

**Cat. No.** ALS2CR8-509H    **Lot. No.** (See product label)

### SPECIFICATION

<b>Product Overview</b>	Human ALS2CR8 full-length ORF ( NP_079020.12, 1 a.a. - 718 a.a.) recombinant protein with GST-tag at N-terminal.
<b>Species</b>	Human
<b>Source</b>	Wheat Germ
<b>Description</b>	CARF (Calcium Responsive Transcription Factor) is a Protein Coding gene. GO annotations related to this gene include transcription factor activity, sequence-specific DNA binding and transcriptional activator activity, RNA polymerase II core promoter proximal region sequence-specific binding.
<b>Molecular Mass</b>	106.2 kDa
<b>AA Sequence</b>	<p>MEQSNDSLRVNHNDGEEKTSQAQVFEHLICMDSRDSSFGQNDSPVLPITTREANN  SLISQNIPGPLTQTQTLSAEQFHLVDQNGQAIQYELQSLGESNAQMMIVASPTENGQ  VLRVIPPTQTGMAQV IIPQGQLVDVNSPRDVP EEEKPSNRNLPTVRVDTLADNTSNYIL  HPQTSFPLPKKSVTGMLEEPLLGPLQPLSSNTPIWACRLRSCEKIGDSYRGYCVSET  ELESVLTFFHKQQTQSVWGTRQSPSPAKPATRLMWKSQYVPYDGIPFVNAGSRAVV  MECQYGPRRKGFQLKKVSEQESRSCQLYKATCPARIYIKKVQKFPEYRVPTDPKIDK  KIIRMEQEKA FNMLKKNLVDAGGVLRWYVQLPTQQAHQYHELET PCLT LSPSPFPVS  SLEEEETAVRDENCALPSRLHPQVAHKIQELV SQGIEQVYAVRKQLRKFVERELFKP  DEVPERHNLSFFPTVNDIKNHIHEVQKSLRNGDTVYNSEIIPATLQWTTD SGNILKET  MTVTFAEGNSPGESITTKVETNQTRGSLSPEPTHLLSSLSSFQPKIFTQLQGLQLQP</p>

 Tel: 1-631-559-9269    1-516-512-3133

 Email: [info@creative-biomart.com](mailto:info@creative-biomart.com)     Fax: 1-631-938-8127

 45-1 Ramsey Road, Shirley, NY 11967, USA



RYTSPDESPAVVSVNNQPSSSPSGLLDTIGSAVMNNSLLLQSHSLQRDTCLTQN  
 NSTASTMGNLPEPDQNLVAMDELVEVGDVEDTGNLEGTVHRILLGDVQTIPIQIIDNH  
 SALIEENPESTISVSQVKQEPKEPALSMEAKNCGL

**Applications**

Enzyme-linked Immunoabsorbent Assay; Western Blot (Recombinant protein);  
 Antibody Production; Protein Array

**Notes**

Best use within three months from the date of receipt of this protein.

**Storage**

Store at -80 centigrade. Aliquot to avoid repeated freezing and thawing.

**Storage Buffer**

50 mM Tris-HCl, 10 mM reduced Glutathione, pH=8.0 in the elution buffer.

**GENE INFORMATION**

**Gene Name**

ALS2CR8 amyotrophic lateral sclerosis 2 (juvenile) chromosome region, candidate 8 [ Homo sapiens ]

**Official Symbol**

ALS2CR8

**Synonyms**

ALS2CR8; amyotrophic lateral sclerosis 2 (juvenile) chromosome region, candidate 8; amyotrophic lateral sclerosis 2 chromosomal region candidate gene 8 protein; calcium response factor; CaRF; FLJ21579; NYD SP24; calcium-response factor; testis development protein NYD-SP24; CARF; NYD-SP24; FLJ12675; DKFZp667N246;

**Gene ID**

79800

**mRNA Refseq**

NM\_001104586

**Protein Refseq**

NP\_001098056

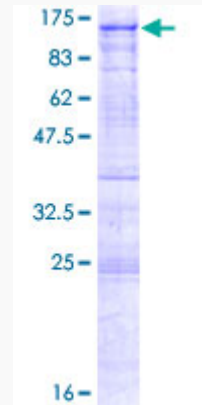
Tel: 1-631-559-9269 1-516-512-3133

Email: [info@creative-biomart.com](mailto:info@creative-biomart.com) Fax: 1-631-938-8127

45-1 Ramsey Road, Shirley, NY 11967, USA

MIM 607586

UniProt ID Q8N187



12.5% SDS-PAGE Stained with Coomassie Blue.

Tel: 1-631-559-9269 1-516-512-3133

Email: [info@creative-biomart.com](mailto:info@creative-biomart.com) Fax: 1-631-938-8127

45-1 Ramsey Road, Shirley, NY 11967, USA