

Recombinant Human ALS2CR8 protein, GST-tagged

Cat. No. ALS2CR8-9603H **Lot. No.** (See product label)

SPECIFICATION

Product Overview	Recombinant Human ALS2CR8 protein(1-311 aa), fused with N-terminal GST tag, was expressed in E. coli.
Species	Human
Source	E.coli
ProteinLength	1-311 aa
Tag	N-GST
Form	The purified protein was Lyophilized from sterile PBS (58mM Na ₂ HPO ₄ ,17mM NaH ₂ PO ₄ , 68mM NaCl, pH7.4). 5 % trehalose and 5 % mannitol are added as protectant before lyophilization.
Purity	90%, by SDS-PAGE with Coomassie Brilliant Blue staining.
Storage	Short-term storage: Store at 2-8°C for (1-2 weeks). Long-term storage: Aliquot and store at -20°C to -80°C for up to 3 months, reconstitution with sterile water and addition of an equal volume of glycerol. Avoid repeat freeze-thaw cycles.
Reconstitution	Reconstitute at 0.25 µg/µl in 200 µl sterile water for short-term storage. After reconstitution with sterile water, if glycerol has no effect on subsequent experiments, it is recommended to add an equal volume of glycerol for long-term storage.

 Tel: 1-631-559-9269 1-516-512-3133

 Email: info@creative-biomart.com  Fax: 1-631-938-8127

 45-1 Ramsey Road, Shirley, NY 11967, USA

AA Sequence

MEQSNDSLRVNHNDGEEKTSAQVFEHLICMDSRDSSFGQNDSPVLPITREANN
 SLISQNIPGPLTQTQTLSAEQFHLVDQNGQAIQYELQSLGESNAQMMIVASPTENGQ
 VLRVIPPTQTGMAQVIIPQGQLVDVNSPRDVPEEKPSNRNLPTVRVDTLADNTSNYIL
 HPQTSFPLPKKSVTGMLEEP LLGPLQLPSSNTPIWACRLRSCEKIGDSYRGYCVSET
 ELESVLT FHKQQTQSVWGTRQSPSPAKPATRLMWKSQYVPYDGIPFVNAGSRAVV
 MECQYGPRRKGFLKKVSEQESRSCQLY

GENE INFORMATION
Gene Name

ALS2CR8 amyotrophic lateral sclerosis 2 (juvenile) chromosome region, candidate 8 [Homo sapiens]

Official Symbol

ALS2CR8

Synonyms

ALS2CR8; amyotrophic lateral sclerosis 2 (juvenile) chromosome region, candidate 8; amyotrophic lateral sclerosis 2 chromosomal region candidate gene 8 protein; calcium response factor; CaRF; FLJ21579; NYD SP24; calcium-response factor; testis development protein NYD-SP24; CARF; NYD-SP24; FLJ12675; DKFZp667N246;

Gene ID

79800

mRNA Refseq

NM_001104586

Protein Refseq

NP_001098056

MIM

607586

UniProt ID

Q8N187

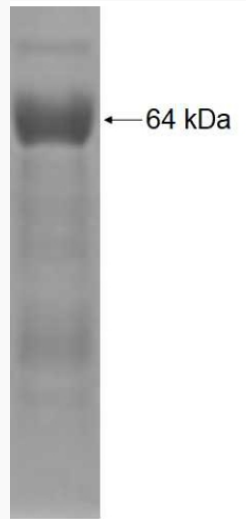
 Tel: 1-631-559-9269 1-516-512-3133

 Email: info@creative-biomart.com  Fax: 1-631-938-8127

 45-1 Ramsey Road, Shirley, NY 11967, USA



SDS-PAGE



Tel: 1-631-559-9269 1-516-512-3133

Email: info@creative-biomart.com Fax: 1-631-938-8127

45-1 Ramsey Road, Shirley, NY 11967, USA