

Recombinant Human ALX1 Protein, GST-Tagged

Cat. No. ALX1-0012H **Lot. No.** (See product label)

SPECIFICATION

Product Overview	Human CART1 full-length ORF (AAH10923.1, 1 a.a. - 326 a.a.) recombinant protein with GST-tag at N-terminal.
Species	Human
Source	Wheat Germ
Description	The specific function of this gene has yet to be determined in humans; however, in rodents, it is necessary for survival of the forebrain mesenchyme and may also be involved in development of the cervix. Mutations in the mouse gene lead to neural tube defects such as acrania and meroanencephaly. [provided by RefSeq, Jul 2008]
Molecular Mass	63.4 kDa
AA Sequence	MEFLSEKFALKSPPSKNSDFYMGAGGPLEHVMETLDNESFYKASAGKCVQAFGPL PRAEHHVRLERTSPCQDSSVNYGITKVEGQPLHTELNRAMDNCNSLRMSPVKGMQ EKGELDELGDKCDSNVSSSKRRRHRTTFTSLQLEELEKVFQKTHYPDVVYVREQLAL RTELTEARVQVWFQNRRAKWRKRERYGQIQQAKSHFAATYDISVLPRTDSYPQIQN NLWAGNASGGSVVTSCMLPRDTSSCMTYPYSHSPRTDSSYTGFSNHQNFQFSHVPLN NFFTDLLTGATNGHAFETKPEFERRSSSIIVLRMKAKEHTANISWAM
Applications	Enzyme-linked Immunoabsorbent Assay Western Blot (Recombinant protein) Antibody Production Protein Array

 Tel: 1-631-559-9269 1-516-512-3133

 Email: info@creative-biomart.com  Fax: 1-631-938-8127

 45-1 Ramsey Road, Shirley, NY 11967, USA

Notes	Best use within three months from the date of receipt of this protein.
Storage	Store at -80 centigrade. Aliquot to avoid repeated freezing and thawing.
Storage Buffer	50 mM Tris-HCl, 10 mM reduced Glutathione, pH=8.0 in the elution buffer.

GENE INFORMATION

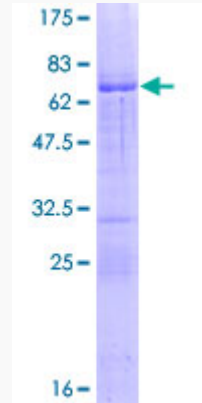
Gene Name	ALX1 ALX homeobox 1 [Homo sapiens]
Official Symbol	ALX1
Synonyms	ALX1; ALX homeobox 1; CART1, cartilage paired class homeoprotein 1; ALX homeobox protein 1; CART-1; cartilage paired-class homeoprotein 1; FND3; CART1;
Gene ID	8092
mRNA Refseq	NM_006982
Protein Refseq	NP_008913
MIM	601527
UniProt ID	Q15699

 Tel: 1-631-559-9269 1-516-512-3133

 Email: info@creative-biomart.com  Fax: 1-631-938-8127

 45-1 Ramsey Road, Shirley, NY 11967, USA

**Quality Control
Testing**



12.5% SDS-PAGE Stained with Coomassie Blue.

 Tel: 1-631-559-9269 1-516-512-3133

 Email: info@creative-biomart.com  Fax: 1-631-938-8127

 45-1 Ramsey Road, Shirley, NY 11967, USA