

## Recombinant Human AMACR Protein, His-tagged

**Cat. No.** AMACR-0409H    **Lot. No.** (See product label)

### SPECIFICATION

<b>Product Overview</b>	Recombinant Human AMACR Protein(Ala2~Asn148), fused with N-terminal His tag, was expressed in E. coli.
<b>Species</b>	Human
<b>Source</b>	E.coli
<b>ProteinLength</b>	Ala2~Asn148
<b>Form</b>	20mM Tris, 150mM NaCl, pH8.0, containing 1mM EDTA, 1mM DTT, 0.01% SKL, 5% Trehalose and Proclin300.
<b>Storage</b>	Avoid repeated freeze/thaw cycles. Store at 2-8°C for one month. Aliquot and store at -80°C for 12 months.
<b>Molecular Mass</b>	20kDa
<b>Endotoxin</b>	<1.0EU per 1g (determined by the LAL method)
<b>Purity</b>	> 90%

### GENE INFORMATION

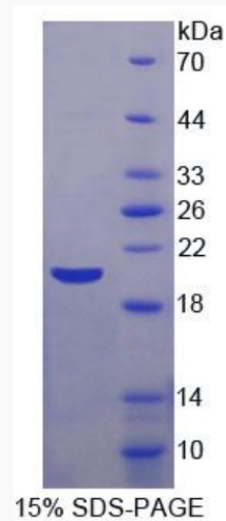
**Official Symbol**      [AMACR](#)

 Tel: 1-631-559-9269    1-516-512-3133

 Email: [info@creative-biomart.com](mailto:info@creative-biomart.com)     Fax: 1-631-938-8127

 45-1 Ramsey Road, Shirley, NY 11967, USA

<b>Synonyms</b>	AMACR; alpha-methylacyl-CoA racemase; RACE; 2-methylacyl-CoA racemase; RM; CBAS4; AMACRD;
<b>Gene ID</b>	23600
<b>mRNA Refseq</b>	NM_001167595
<b>Protein Refseq</b>	NP_001161067
<b>MIM</b>	604489
<b>UniProt ID</b>	Q9UHK6

**SDS-PAGE**

 Tel: 1-631-559-9269 1-516-512-3133

 Email: [info@creative-biomart.com](mailto:info@creative-biomart.com)  Fax: 1-631-938-8127

 45-1 Ramsey Road, Shirley, NY 11967, USA