

Recombinant Human AMELX protein, GST-tagged

Cat. No. AMELX-519H Lot. No. (See product label)

SPECIFICATION

Product Overview	Human AMELX full-length ORF (NP_001133.1, 1 a.a. - 191 a.a.) recombinant protein with GST-tag at N-terminal.
Species	Human
Source	Wheat Germ
Description	This gene encodes a member of the amelogenin family of extracellular matrix proteins. Amelogenins are involved in biomineralization during tooth enamel development. Mutations in this gene cause X-linked amelogenesis imperfecta. Alternative splicing results in multiple transcript variants encoding different isoforms. [provided by RefSeq, Jul 2008]
Molecular Mass	48 kDa
AA Sequence	MGTWILFACLLGAAFAMPLPPHPGHPGYINFSYEVLTPWKYQSIRPPYPSYGYEPM GGWLHHQIIPVLSQQHPPTHTLQPHHHIPVPAQQPVIPQQPMMPVPGQHSMTPIQ HHQPNLPPPAQQPYQPQPVQPQPHQPMQPQPPVHPMQPLPPQPPLPPMFPMQPL PPMLPDLTLEAWPSTDKTKREEVD
Applications	Enzyme-linked Immunoabsorbent Assay; Western Blot (Recombinant protein); Antibody Production; Protein Array
Notes	Best use within three months from the date of receipt of this protein.

Tel: 1-631-559-9269 1-516-512-3133

Email: info@creative-biomart.com Fax: 1-631-938-8127

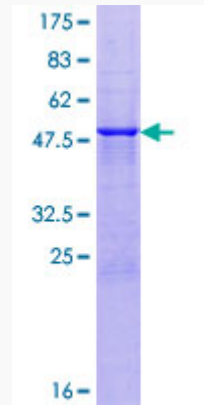
45-1 Ramsey Road, Shirley, NY 11967, USA

Storage	Store at -80 centigrade. Aliquot to avoid repeated freezing and thawing.
Storage Buffer	50 mM Tris-HCl, 10 mM reduced Glutathione, pH=8.0 in the elution buffer.
GENE INFORMATION	
Gene Name	AMELX amelogenin, X-linked [Homo sapiens]
Official Symbol	AMELX
Synonyms	AMELX; amelogenin, X-linked; AIH1, amelogenin (X chromosome, amelogenesis imperfecta 1) , AMG; amelogenin, X isoform; amelogenesis imperfecta 1; amelogenin (amelogenesis imperfecta 1, X-linked); amelogenin (X chromosome, amelogenesis imperfecta 1); AMG; AI1E; AIH1; ALGN; AMGL; AMGX;
Gene ID	265
mRNA Refseq	NM_001142
Protein Refseq	NP_001133
MIM	300391
UniProt ID	Q99217

 Tel: 1-631-559-9269 1-516-512-3133

 Email: info@creative-biomart.com  Fax: 1-631-938-8127

 45-1 Ramsey Road, Shirley, NY 11967, USA



12.5% SDS-PAGE Stained with Coomassie Blue.

 Tel: 1-631-559-9269 1-516-512-3133

 Email: info@creative-biomart.com  Fax: 1-631-938-8127

 45-1 Ramsey Road, Shirley, NY 11967, USA