

## Recombinant Human AMELX, His&SUMO-tagged

**Cat. No.** AMELX-7078H    **Lot. No.** (See product label)

### SPECIFICATION

<b>Product Overview</b>	Recombinant Human AMELX(NP_001133.1)(17-191aa), fused to two N-terminal tag, His tag and SUMO tag, was expressed in E. coli.
<b>Species</b>	Human
<b>Source</b>	E.coli
<b>ProteinLength</b>	17-191aa
<b>Form</b>	If the delivery form is liquid, the default storage buffer is Tris/PBS-based buffer, 5%-50% glycerol. If the delivery form is lyophilized powder, the buffer before lyophilization is Tris/PBS-based buffer, 6% Trehalose, pH 8.0.
<b>Molecular Mass</b>	35.9kDa
<b>AA Sequence</b>	MPLPPHPGHPGYINFSYEVLTPKQWYQSIRPPYPSYGYEPMGGWLHHQIIPVLSQQ HPPTHTLQPHHHIPVVPAQQPVIPQQPMMPVPGQHSMTPIQHHQPNLPPPAQQPY QPQPVPQPHQPMQPQPPVHPMQPLPPQPLPPMFPMQPLPPMLPDLTLEAWPS TDKTKREEVD
<b>Purity</b>	Greater than 90% as determined by SDS-PAGE.
<b>Notes</b>	Repeated freezing and thawing is not recommended. Store working aliquots at 4°C for up to one week.

 Tel: 1-631-559-9269    1-516-512-3133

 Email: [info@creative-biomart.com](mailto:info@creative-biomart.com)     Fax: 1-631-938-8127

 45-1 Ramsey Road, Shirley, NY 11967, USA

**Storage** Store at -20°C upon receipt, aliquoting is necessary for mutiple use. Avoid repeated freeze-thaw cycles.

**Reconstitution** We recommend that this vial be briefly centrifuged prior to opening to bring the contents to the bottom. Please reconstitute protein in deionized sterile water to a concentration of 0.1-1.0 mg/mL. We recommend to add 5-50% of glycerol (final concentration) and aliquot for long-term storage at -20°C/-80°C. Our default final concentration of glycerol is 50%. Customers could use it as reference.

## GENE INFORMATION

**Gene Name** [AMELX amelogenin X-linked \[ Homo sapiens \(human\) \]](#)

**Official Symbol** [AMELX](#)

**Synonyms** AMG; AI1E; AIH1; ALGN; AMGL; AMGX

**Gene ID** [265](#)

**mRNA Refseq** [NM\\_001142.2](#)

**Protein Refseq** [NP\\_001133.1](#)

**MIM** [300391](#)

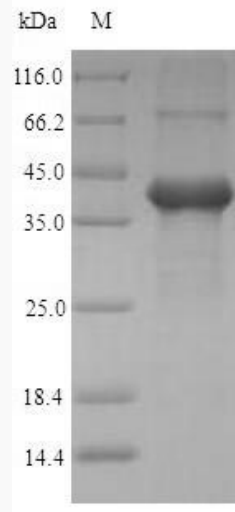
**UniProt ID** [Q99217](#)

 Tel: 1-631-559-9269 1-516-512-3133

 Email: [info@creative-biomart.com](mailto:info@creative-biomart.com)  Fax: 1-631-938-8127

 45-1 Ramsey Road, Shirley, NY 11967, USA

**SDS-PAGE**



 Tel: 1-631-559-9269 1-516-512-3133

 Email: [info@creative-biomart.com](mailto:info@creative-biomart.com)  Fax: 1-631-938-8127

 45-1 Ramsey Road, Shirley, NY 11967, USA