

Recombinant Human AMELX, His-tagged

Cat. No. AMELX-7079H **Lot. No.** (See product label)

SPECIFICATION

Product Overview	Recombinant Human AMELX(NP_001133.1)(Tyr49~Arg187), fused to two N-terminal His tag, was expressed in E. coli.
Species	Human
Source	E.coli
ProteinLength	Tyr49~Arg187
Form	Supplied as lyophilized form in PBS, pH7.4, containing 5% sucrose, 0.01% sarcosyl.
Molecular Mass	17.3kDa
AA Sequence	MGHHHHHHSGSEF- YP SYGYEPMGGW LHHQIIPVLS QQHPPTHTLQ PHHHIPVVPA QQPVIPQQPM MPVPGQHSMT PIQHHQPN LP PPAQQPYQPQ PVQPQP HQPM QPQPPVHPMQ PLPPQPPLPP MFPMQPLPPM LPDLTLEAWP STDKTKR
Endotoxin	<1.0EU per 1g (determined by the LAL method)
Purity	> 95%
Applications	Positive Control; Immunogen; SDS-PAGE; WB.
Storage	Avoid repeated freeze/thaw cycles.

 Tel: 1-631-559-9269 1-516-512-3133

 Email: info@creative-biomart.com  Fax: 1-631-938-8127

 45-1 Ramsey Road, Shirley, NY 11967, USA

Store at 2-8°C for one month.
Aliquot and store at -80°C for 12 months.

Reconstitution Reconstitute in PBS or others.

GENE INFORMATION

Gene Name AMELX amelogenin X-linked [Homo sapiens (human)]

Official Symbol AMELX

Synonyms AMG; AI1E; AIH1; ALGN; AMGL; AMGX


Gene ID 265

mRNA Refseq NM_001142.2

Protein Refseq NP_001133.1

MIM 300391

UniProt ID Q99217

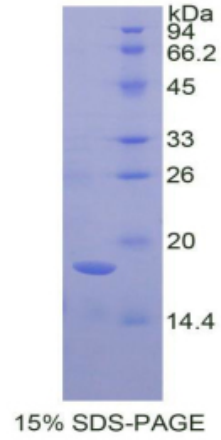
 Tel: 1-631-559-9269 1-516-512-3133

 Email: info@creative-biomart.com  Fax: 1-631-938-8127

 45-1 Ramsey Road, Shirley, NY 11967, USA



SDS-PAGE



Tel: 1-631-559-9269 1-516-512-3133

Email: info@creative-biomart.com Fax: 1-631-938-8127

45-1 Ramsey Road, Shirley, NY 11967, USA