

Recombinant Human AMFR protein, GST-tagged

Cat. No. AMFR-520H **Lot. No.** (See product label)

SPECIFICATION

Product Overview	Human AMFR partial ORF (NP_001135, 451 a.a. - 550 a.a.) recombinant protein with GST-tag at N-terminal.
Species	Human
Source	Wheat Germ
Description	This locus encodes a glycosylated transmembrane receptor. Its ligand, autocrine motility factor, is a tumor motility-stimulating protein secreted by tumor cells. The encoded receptor is also a member of the E3 ubiquitin ligase family of proteins. It catalyzes ubiquitination and endoplasmic reticulum-associated degradation of specific proteins. [provided by RefSeq, Feb 2012]
Molecular Mass	36.74 kDa
AA Sequence	QASNSQLNAMAHQIQEMFPQVPYHLVLQDLQLTRSVEITTDNILEGRIQVPFPTQRS DSIRPALNSPVERPSSDQEEGETSAQTERVPLDLSRLEETLD
Applications	Enzyme-linked Immunoabsorbent Assay; Western Blot (Recombinant protein); Antibody Production; Protein Array
Notes	Best use within three months from the date of receipt of this protein.
Storage	Store at -80 centigrade. Aliquot to avoid repeated freezing and thawing.

 Tel: 1-631-559-9269 1-516-512-3133

 Email: info@creative-biomart.com  Fax: 1-631-938-8127

 45-1 Ramsey Road, Shirley, NY 11967, USA

Storage Buffer 50 mM Tris-HCl, 10 mM reduced Glutathione, pH=8.0 in the elution buffer.

GENE INFORMATION

Gene Name AMFR autocrine motility factor receptor, E3 ubiquitin protein ligase [Homo sapiens]

Official Symbol AMFR

Synonyms AMFR; autocrine motility factor receptor, E3 ubiquitin protein ligase; autocrine motility factor receptor; gp78; RNF45; RING finger protein 45; GP78;

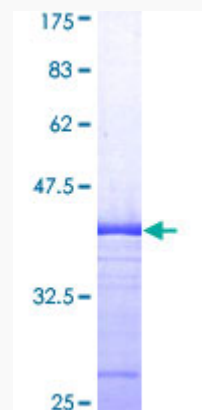
Gene ID 267

mRNA Refseq NM_001144

Protein Refseq NP_001135

MIM 603243

UniProt ID P26442



 Tel: 1-631-559-9269 1-516-512-3133

 Email: info@creative-biomart.com  Fax: 1-631-938-8127

 45-1 Ramsey Road, Shirley, NY 11967, USA



12.5% SDS-PAGE Stained with Coomassie Blue.

 Tel: 1-631-559-9269 1-516-512-3133

 Email: info@creative-biomart.com  Fax: 1-631-938-8127

 45-1 Ramsey Road, Shirley, NY 11967, USA