

Recombinant Mouse AMH Protein (450-552 aa), His-tagged

Cat. No. AMH-1327M Lot. No. (See product label)

SPECIFICATION

Product Overview	Recombinant Mouse AMH Protein (450-552 aa) is produced by Yeast expression system. This protein is fused with a 6xHis tag at the N-terminal. Protein Description: Partial.
Species	Mouse
Source	Yeast
ProteinLength	450-552 aa
Description	This glycoprotein, produced by the Sertoli cells of the testis, causes regression of the Mullerian duct. It is also able to inhibit the growth of tumors derived from tissues of Mullerian duct origin.
Form	Tris-based buffer, 50% glycerol
Molecular Mass	13.3 kDa
AA Sequence	DKGQDGPCALRELSVDLRAERSVLIPETYQANNCQGACRWPQSDRNPRYGNHVLL LLKMQARGAALGRLPCCVPTAYAGKLLISLSEERISADHVPNMVATEC
Purity	> 90% as determined by SDS-PAGE.
Notes	Repeated freezing and thawing is not recommended. Store working aliquots at 4 centigrade for up to one week.

 Tel: 1-631-559-9269 1-516-512-3133

 Email: info@creative-biomart.com  Fax: 1-631-938-8127

 45-1 Ramsey Road, Shirley, NY 11967, USA

Storage The shelf life is related to many factors, storage state, buffer ingredients, storage temperature and the stability of the protein itself. Generally, the shelf life of liquid form is 6 months at -20 centigrade/-80 centigrade. The shelf life of lyophilized form is 12 months at -20 centigrade/-80 centigrade.

Concentration A hardcopy of COA with reconstitution instruction is sent along with the products. Please refer to it for detailed information.

GENE INFORMATION

Gene Name [Amh anti-Mullerian hormone \[Mus musculus \]](#)

Official Symbol [AMH](#)

Synonyms AMH; anti-Mullerian hormone; MIS;

Gene ID [11705](#)

mRNA Refseq [NM_007445](#)

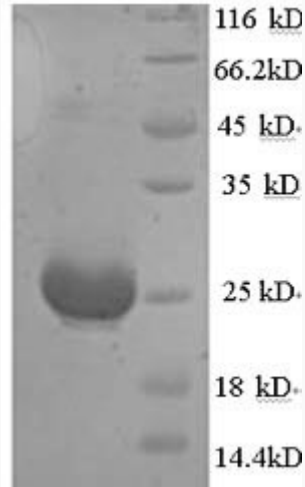
Protein Refseq [NP_031471](#)

UniProt ID [P27106](#)

 Tel: 1-631-559-9269 1-516-512-3133

 Email: info@creative-biomart.com  Fax: 1-631-938-8127

 45-1 Ramsey Road, Shirley, NY 11967, USA



(Tris-Glycine gel) Discontinuous SDS-PAGE (reduced) with 5% enrichment gel and 15% separation gel.

 Tel: 1-631-559-9269 1-516-512-3133

 Email: info@creative-biomart.com  Fax: 1-631-938-8127

 45-1 Ramsey Road, Shirley, NY 11967, USA