

## Recombinant Pig AMH protein, His-tagged

**Cat. No.** AMH-1765P    **Lot. No.** (See product label)

### SPECIFICATION

<b>Product Overview</b>	Recombinant Pig AMH aa. (Leu419~Arg575) fused with N-terminal His tag was produced in E. coli cells.
<b>Species</b>	Pig
<b>Source</b>	E.coli
<b>ProteinLength</b>	Leu419~Arg575
<b>Form</b>	Freeze-dried powder
<b>Molecular Mass</b>	21kDa as determined by SDS-PAGE reducing conditions.
<b>Endotoxin</b>	<1.0EU per 1ug (determined by the LAL method)
<b>Purity</b>	>95%
<b>Applications</b>	SDS-PAGE; WB; ELISA; IP; CoIP; Purification; Amine Reactive Labeling.
<b>Stability</b>	The thermal stability is described by the loss rate. The loss rate was determined by accelerated thermal degradation test, that is, incubate the protein at 37°C for 48h, and no obvious degradation and precipitation were observed. The loss rate is less than 5% within the expiration date under appropriate storage condition.
<b>Storage</b>	Avoid repeated freeze/thaw cycles. Store at 2-8°C for one month. Aliquot and store at

 Tel: 1-631-559-9269    1-516-512-3133

 Email: [info@creative-biomart.com](mailto:info@creative-biomart.com)     Fax: 1-631-938-8127

 45-1 Ramsey Road, Shirley, NY 11967, USA

	-80°C for 12 months.
<b>Concentration</b>	200µg/mL
<b>Storage buffer</b>	20mM Tris, 150mM NaCl, pH8.0, containing 1mM EDTA, 1mM DTT, 0.01% sarcosyl, 5%Trehalose and Proclin300.
<b>Reconstitution</b>	Reconstitute in 20mM Tris, 150mM NaCl (pH8.0) to a concentration of 0.1-1.0 mg/mL. Do not vortex.
<b>Isoelectric Point</b>	9.6

## GENE INFORMATION

<b>Gene Name</b>	AMH anti-Mullerian hormone [ <i>Sus scrofa</i> (pig) ]
<b>Official Symbol</b>	AMH
<b>Synonyms</b>	AMH; MIS; muellerian-inhibiting factor; Mullerian inhibitory substance; anti-Muellerian hormone; muellerian-inhibiting substance
<b>Gene ID</b>	397578
<b>mRNA Refseq</b>	NM_214310.2
<b>Protein Refseq</b>	NP_999475.2

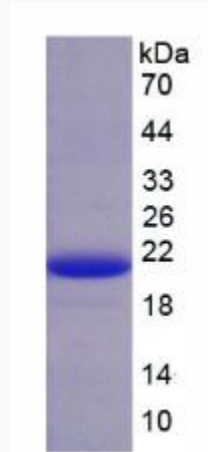
 Tel: 1-631-559-9269 1-516-512-3133

 Email: [info@creative-biomart.com](mailto:info@creative-biomart.com)  Fax: 1-631-938-8127

 45-1 Ramsey Road, Shirley, NY 11967, USA



SDS-PAGE



Tel: 1-631-559-9269 1-516-512-3133

Email: [info@creative-biomart.com](mailto:info@creative-biomart.com) Fax: 1-631-938-8127

45-1 Ramsey Road, Shirley, NY 11967, USA