

## Recombinant Bovine AMH Protein (25-575 aa), His-tagged

Cat. No. AMH-2081B Lot. No. (See product label)

### SPECIFICATION

<b>Product Overview</b>	Recombinant Bovine AMH Protein (25-575 aa) is produced by Yeast expression system. This protein is fused with a 6xHis tag at the N-terminal. Protein Description: Full Length of Mature Protein.
<b>Species</b>	Bovine
<b>Source</b>	Yeast
<b>ProteinLength</b>	25-575 aa
<b>Description</b>	This glycoprotein, produced by the Sertoli cells of the testis, causes regression of the Mullerian duct. It is also able to inhibit the growth of tumors derived from tissues of Mullerian duct origin.
<b>Form</b>	Tris-based buffer, 50% glycerol
<b>Molecular Mass</b>	60.3 kDa
<b>AA Sequence</b>	REEVFSTALSALPREQATGSGALIFQQAWDWPLSSLWLPGSPLDPLCLVTLHGSGNGS RAPLRVVGVLSSYEQAFLEAVRRTHWGLSDLTTFVAVCPAGNGQPVLPHLQRLQAW LGEPGGRWLVLHLEEVWTEPTPLLRFFQEPGPGASPELALLVVYPGPGLEVTVT GAGLPGTQSLCLTADSDFLALVVDHPEGAWRRPGLALTLRRRNGALLSTAQLQAL LFGADSRCFTRKTPALLLLLPARSSAPMPAHGRDLVFPFQPRASPEPEEAPPSADP FLETLRLLVRLAGPPARASPPRLALDPGALAGFPQGQVNLSDPAALERLLDGEEL LLLLPPTAATTGVPATPQGPKSPLWAAGLARRVAAELQAVAAELRALPGLPPAAPPL

 Tel: 1-631-559-9269 1-516-512-3133

 Email: [info@creative-biomart.com](mailto:info@creative-biomart.com)  Fax: 1-631-938-8127

 45-1 Ramsey Road, Shirley, NY 11967, USA

LARLLALCPGNPDSPGGPLRALLLLKALQGLRAEWRGRERSGSARAQRSAGAAAA  
 DGPCALRELSVDLRAERSVLIPETYQANNCQGACGWPQSDRNPRYGNHVVLLKLM  
 QARGATLARPPCCVPTAYTGKLLISLSEERISAHHVPMVATECGCR

**Purity** > 90% as determined by SDS-PAGE.

**Notes** Repeated freezing and thawing is not recommended. Store working aliquots at 4 centigrade for up to one week.

**Storage** The shelf life is related to many factors, storage state, buffer ingredients, storage temperature and the stability of the protein itself. Generally, the shelf life of liquid form is 6 months at -20 centigrade/-80 centigrade. The shelf life of lyophilized form is 12 months at -20 centigrade/-80 centigrade.

**Concentration** A hardcopy of COA with reconstitution instruction is sent along with the products.

## GENE INFORMATION

**Gene Name** [AMH anti-Mullerian hormone \[ Bos taurus \(cattle\) \]](#)

**Official Symbol** [AMH](#)

**Synonyms** AMH;

**Gene ID** [280718](#)

**mRNA Refseq** [NM\\_173890](#)

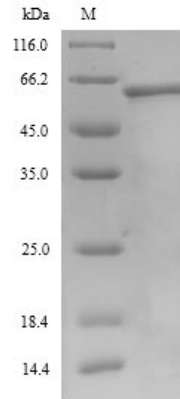
**Protein Refseq** [NP\\_776315](#)

**UniProt ID** [P03972](#)

 Tel: 1-631-559-9269 1-516-512-3133

 Email: [info@creative-biomart.com](mailto:info@creative-biomart.com)  Fax: 1-631-938-8127

 45-1 Ramsey Road, Shirley, NY 11967, USA



(Tris-Glycine gel) Discontinuous SDS-PAGE (reduced) with 5% enrichment gel and 15% separation gel.

 Tel: 1-631-559-9269 1-516-512-3133

 Email: [info@creative-biomart.com](mailto:info@creative-biomart.com)  Fax: 1-631-938-8127

 45-1 Ramsey Road, Shirley, NY 11967, USA