

Active Recombinant Human AMH protein, His-tagged

Cat. No. AMH-892H Lot. No. (See product label)

SPECIFICATION

Product Overview	Recombinant Human AMH protein(P03971)(25-449 aa), fused with C-terminal His tag, was expressed in Mammalian cells.
Species	Human
Source	Mammalian cells
ProteinLength	25-449 aa
Form	Supplied as a 0.2 µm filtered solution of PBS, pH7.4.
Bio-activity	Immobilized Human AMHN at 2µg/ml (100 µl/well) can bind Human AMH Antibody(6D4)(Mouse IgG1). The ED50 of Human AMH Antibody(6D4)(Mouse IgG1) is 6.96 ng/ml.
Molecular Mass	46.4 kDa
AASequence	LRAEPAVGTSGLIFREDLDWPPGSPQEPLCLVALGGDSNGSSSPLRVVGALSAYE QAFLGAVQRRARWGPRDLATFGVCNTGDRQAALPSLRRLGAWLRDPGGQRLVVLHL EEVTWEPTPSLRFQEPPPGGAGPPELALLVLYPGPGPEVTVTRAGLPGAQSLCPSR DTRYLVLAVDRPAGAWRGSGLALTLQPRGEDSRLSTARLQALLFGDDHRCFTRMTP ALLLLPRSEPAPLPAHGQLDTPFPFPPRPSAELEESPPSADPFLETLTRLVRALRVPP ARASAPRLALDPDALAGFPQGLVNLSDPAALERLLDGEEPLLLLLRPTAATTGDPAPL HDPTSAPWATALARRVAAELQAAAAELRSLPGLPPATAPLLARLLALCPGGPGGLG DPLRALLLLKALQGLRVEWRGRDPRGPGRAGSHHHHHH

 Tel: 1-631-559-9269 1-516-512-3133

 Email: info@creative-biomart.com  Fax: 1-631-938-8127

 45-1 Ramsey Road, Shirley, NY 11967, USA

Purity	Greater than 95% as determined by reducing SDS-PAGE. (QC verified)
Storage	Reconstituted protein solution should be stored at ≤ -20°C. Stable for at least 24 months when stored as instructed.
Reconstitution	It is recommended that sterile water be added to the vial to prepare a stock solution of 0.2 ug/ul. Centrifuge the vial at 4°C before opening to recover the entire contents.

GENE INFORMATION

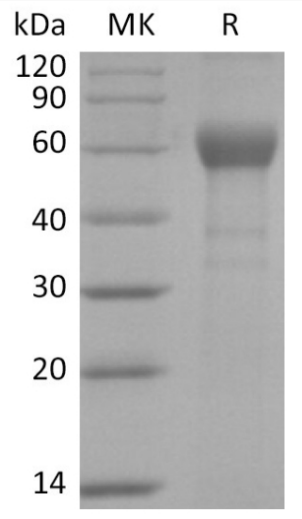
Gene Name	AMH anti-Mullerian hormone [Homo sapiens]
Official Symbol	AMH
Synonyms	AMH; anti-Mullerian hormone; muellerian-inhibiting factor; MIS; anti-Muellerian hormone; Mullerian inhibiting factor; Mullerian inhibiting substance; muellerian-inhibiting substance; MIF;
Gene ID	268
mRNA Refseq	NM_000479
Protein Refseq	NP_000470
MIM	600957
UniProt ID	P03971

 Tel: 1-631-559-9269 1-516-512-3133

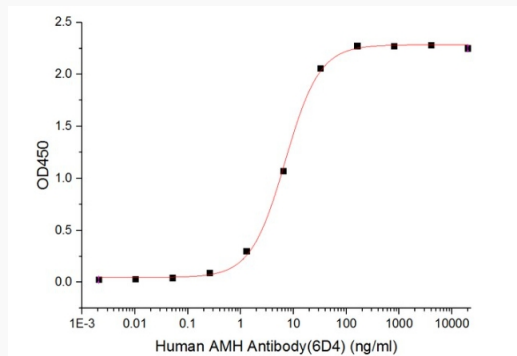
 Email: info@creative-biomart.com  Fax: 1-631-938-8127

 45-1 Ramsey Road, Shirley, NY 11967, USA

SDS-PAGE



Activity



 Tel: 1-631-559-9269 1-516-512-3133

 Email: info@creative-biomart.com  Fax: 1-631-938-8127

 45-1 Ramsey Road, Shirley, NY 11967, USA