

Recombinant Human AMPH Protein, MYC/DDK-tagged, C13 and N15-labeled

Cat. No. AMPH-338H **Lot. No.** (See product label)

SPECIFICATION

Product Overview	AMPH MS Standard C13 and N15-labeled recombinant protein (NP_001626) with a C-terminal MYC/DDK tag, was expressed in HEK293 cells.
Species	Human
Source	HEK293
Description	This gene encodes a protein associated with the cytoplasmic surface of synaptic vesicles. A subset of patients with stiff-man syndrome who were also affected by breast cancer are positive for autoantibodies against this protein. Alternate splicing of this gene results in two transcript variants encoding different isoforms. Additional splice variants have been described, but their full length sequences have not been determined. A pseudogene of this gene is found on chromosome 11. [provided by RefSeq, Nov 2010]
Molecular Mass	76.2 kDa
AA Sequence	MADIKTGIFAKNVQKRLNRAQEKVLQKLGKADETKDEQFEEYVQNFKRQEAEGTRL QRELRGYLAAIKGMQEASMKLTESLHEVYEPDWYGREVDKMGVGEKCDVLWEDFHQ KLV DGSLLTLDTYLGQFPDIKNRIAKRSRKLVDYDSARHHLEALQSSKRKDESRISKA EEEFQKAQKVFEFNVDLQEELPSLWSRRVGFYVNTFKNVSSLEAKFHKEIAVLCHK LYEVMTKLGDQHADKAFTIQGAPSDSGPLRIAKTPSPPEEPSPLPSPTASPNHTLAP ASPAPARPRSPSQTRKGPVPPLPKVTPTKELQQENIISFFEDNFVPEISVTTSPSQNE

 Tel: 1-631-559-9269 1-516-512-3133

 Email: info@creative-biomart.com  Fax: 1-631-938-8127

 45-1 Ramsey Road, Shirley, NY 11967, USA

VPEVKKEETLLDLDLDFDPFKPEVTPAGSAGVTHSPMSQTLPWDLWTTSTDLVQPASG
 GSFNGFTQPQDTSLFTMQTDQSMICNLAESEQAPPTEPKAEEPLAAVTPAVGLDLG
 MDTRAEEPVEEAVIIPGADADA AVGTLVSA AEGAPGEEAE AETATVPAGEGVSLEEA
 KIGTETTEGAESAQPEAELEATVPQEKVIPSVVIEPASNHEEEGENEITIGAEPKETT
 EDAAPPGPTSETPELATEQKPIQDPQPTPSAPAMGAADQLASAREASQELPPGFLY
 KVETLHDFEAANSDELTLQRGDVVLVVPDSEADQDAGWLGVKESDWLQYRDLA
 TYKGLFPENFTRRLDTRTRPLEQKLISEEDLAANDILDYKDDDDKV

Purity > 80% as determined by SDS-PAGE and Coomassie blue staining

Stability Stable for 3 months from receipt of products under proper storage and handling conditions.

Storage Store at -80 centigrade. Avoid repeated freeze-thaw cycles.

Concentration 50 µg/mL as determined by BCA

Storage Buffer 100 mM glycine, 25 mM Tris-HCl, pH 7.3.

GENE INFORMATION

Gene Name [AMPH amphiphysin \[Homo sapiens \(human\) \]](#)

Official Symbol [AMPH](#)

Synonyms

AMPH; amphiphysin; amphiphysin (Stiff Man syndrome with breast cancer 128kDa autoantigen), amphiphysin (Stiff Mann syndrome with breast cancer 128kD autoantigen); amphiphysin I; amphiphysin (Stiff-Mann syndrome with breast cancer 128kD autoantigen); AMPH1;

Gene ID [273](#)

 Tel: 1-631-559-9269 1-516-512-3133

 Email: info@creative-biomart.com  Fax: 1-631-938-8127

 45-1 Ramsey Road, Shirley, NY 11967, USA

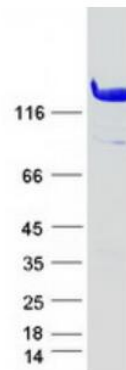
mRNA Refseq [NM_001635](#)

Protein Refseq [NP_001626](#)

MIM [600418](#)

UniProt ID [P49418](#)

SDS-PAGE



 Tel: 1-631-559-9269 1-516-512-3133

 Email: info@creative-biomart.com  Fax: 1-631-938-8127

 45-1 Ramsey Road, Shirley, NY 11967, USA