

# Recombinant Human AMT Protein, Myc/DDK-tagged, C13 and N15-labeled

**Cat. No.** AMT-6644H    **Lot. No.** (See product label)

## SPECIFICATION

<b>Product Overview</b>	AMT MS Standard C13 and N15-labeled recombinant protein (NP_000472) with a C-terminal MYC/DDK tag, was expressed in HEK293 cells.
<b>Species</b>	Human
<b>Source</b>	HEK293
<b>Description</b>	This gene encodes one of four critical components of the glycine cleavage system. Mutations in this gene have been associated with glycine encephalopathy. Multiple transcript variants encoding different isoforms have been found for this gene.
<b>Molecular Mass</b>	43.8 kDa
<b>AA Sequence</b>	<p>MQRAVSVVARLGFRLQAFPPALCRPLSCAQEVLRRRTPLYDFHLAHGGKMVAFAGW  SLPVQYRDSHTDSDLHTRQHCSLFDVSHMLQTKILGSDRVKLMESLVVGDIAELRPN  QGTLSLFTNEAGGILDDLIVTNTSEGHLYVVSNAQCWEKDLALMQDKVRELQNQGR  DVGLEVLNALLALQGPTAAQVLQAGVADDLRKLPFMTSAVMEVFGVSGCRVTRC  GYTGEDGVEISVPVAGAVHLATAILKNPEVKLAGLAARDSLRLEAGLCLYGNDIDEHT  TPVEGSLSWTLGKRRRAAMDFPGAKVIVPQLKGRVQRRRVGLMCEGAPMRAHSPI  LNMEGTKIGTVTSGCPSPLKKNVAMGYVPCESRPGTMLLVEVRRKQQMAVVSK  MPFVPTNYYTLKTRTRPLEQKLISEEDLAANDILDYKDDDDKV</p>
<b>Purity</b>	> 80% as determined by SDS-PAGE and Coomassie blue staining

 Tel: 1-631-559-9269    1-516-512-3133

 Email: [info@creative-biomart.com](mailto:info@creative-biomart.com)     Fax: 1-631-938-8127

 45-1 Ramsey Road, Shirley, NY 11967, USA

<b>Stability</b>	Stable for 3 months from receipt of products under proper storage and handling conditions.
<b>Storage</b>	Store at -80 centigrade. Avoid repeated freeze-thaw cycles.
<b>Concentration</b>	50 µg/mL as determined by BCA
<b>Storage Buffer</b>	100 mM glycine, 25 mM Tris-HCl, pH 7.3.

## GENE INFORMATION

<b>Gene Name</b>	AMT aminomethyltransferase [ Homo sapiens (human) ]
<b>Official Symbol</b>	AMT
<b>Synonyms</b>	AMT; aminomethyltransferase; aminomethyltransferase (glycine cleavage system protein T); aminomethyltransferase, mitochondrial; GCST; glycine cleavage system protein T; NKH; glycine cleavage system T protein; GCE; GCVT;
<b>Gene ID</b>	275
<b>mRNA Refseq</b>	NM_000481
<b>Protein Refseq</b>	NP_000472
<b>MIM</b>	238310
<b>UniProt ID</b>	P48728

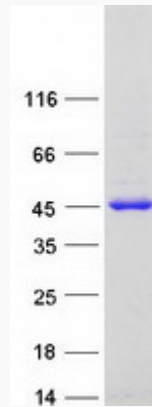
 Tel: 1-631-559-9269 1-516-512-3133

 Email: [info@creative-biomart.com](mailto:info@creative-biomart.com)  Fax: 1-631-938-8127

 45-1 Ramsey Road, Shirley, NY 11967, USA



SDS-PAGE



Tel: 1-631-559-9269 1-516-512-3133

Email: [info@creative-biomart.com](mailto:info@creative-biomart.com) Fax: 1-631-938-8127

45-1 Ramsey Road, Shirley, NY 11967, USA