

Recombinant Human AMT protein, GST-tagged

Cat. No. AMT-6744H **Lot. No.** (See product label)

SPECIFICATION

Product Overview	Recombinant Human AMT protein(83-383 aa), fused with N-terminal GST tag, was expressed in E. coli.
ProteinLength	83-383 aa
Tag	N-GST
Form	The purified protein was Lyophilized from sterile PBS (58mM Na ₂ HPO ₄ , 17mM NaH ₂ PO ₄ , 68mM NaCl, pH7.4). 5 % trehalose and 5 % mannitol are added as protectant before lyophilization.
Purity	85%, by SDS-PAGE with Coomassie Brilliant Blue staining.
Storage	Short-term storage: Store at 2-8°C for (1-2 weeks). Long-term storage: Aliquot and store at -20°C to -80°C for up to 3 months, reconstitution with sterile water and addition of an equal volume of glycerol. Avoid repeat freeze-thaw cycles.
Reconstitution	Reconstitute at 0.25 µg/µl in 200 µl sterile water for short-term storage. After reconstitution with sterile water, if glycerol has no effect on subsequent experiments, it is recommended to add an equal volume of glycerol for long-term storage.
AA Sequence	QTKILGSDRVKLMESLVVGDIAELRPNQGTLSLFTNEAGGILDDLIVTNTSEGHLYVV SNAGCWEKDLALMQDKVRELQNGRVDGLEVLDNALLALQGPTAAQVLQAGVADD LRKLPFMSTAVMEVFGVSGCRVTRCGYTGEDGVEISVPVAGAVHLATAILKNPEVKL AGLAARDSLRLEAGLCLYGNDIDEHTTPVEGSLSWTLGKRRAAMDFPGAKVIVPQL

 Tel: 1-631-559-9269 1-516-512-3133

 Email: info@creative-biomart.com  Fax: 1-631-938-8127

 45-1 Ramsey Road, Shirley, NY 11967, USA

KGRVQRRRVGLMCEGAPMRAHSPILNMEGTKIGTVTSGCPSPSLKKNVAMGYVPC
EYSRPGTMLLVELPSGPCF

GENE INFORMATION

Gene Name [AMT aminomethyltransferase \[Homo sapiens \]](#)

Official Symbol [AMT](#)

Synonyms AMT; aminomethyltransferase; aminomethyltransferase (glycine cleavage system protein T); aminomethyltransferase, mitochondrial; GCST; glycine cleavage system protein T; NKH; glycine cleavage system T protein; GCE; GCVT;

Gene ID [275](#)

mRNA Refseq [NM_000481](#)

Protein Refseq [NP_000472](#)

MIM [238310](#)

UniProt ID [P48728](#)

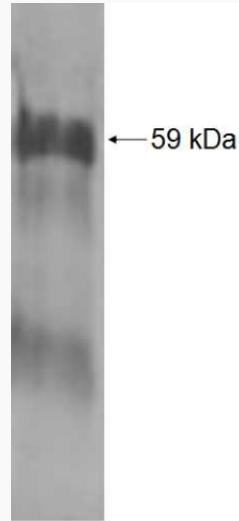
 Tel: 1-631-559-9269 1-516-512-3133

 Email: info@creative-biomart.com  Fax: 1-631-938-8127

 45-1 Ramsey Road, Shirley, NY 11967, USA



SDS-PAGE



Tel: 1-631-559-9269 1-516-512-3133

Email: info@creative-biomart.com Fax: 1-631-938-8127

45-1 Ramsey Road, Shirley, NY 11967, USA