

Recombinant Human AMTN protein, GST-tagged

Cat. No. AMTN-532H **Lot. No.** (See product label)

SPECIFICATION

Product Overview	Human AMTN full-length ORF (NP_997722.1, 1 a.a. - 209 a.a.) recombinant protein with GST-tag at N-terminal.
Species	Human
Source	Wheat Germ
Description	The mineralized portions of teeth, the dentin and enamel, are formed by mesenchyme-derived odontoblasts and epithelium-derived ameloblasts, respectively. As ameloblasts differentiate, they deposit specific proteins necessary for enamel formation, including amelogenin (AMELX; MIM 300391), enamelin (ENAM; MIM 606585), and ameloblastin (AMBN; MIM 601259), in the organic enamel matrix. Amelotin is specifically expressed in maturation-stage ameloblasts (Iwasaki et al., 2005 [PubMed 16304441]).[supplied by OMIM, Mar 2008]
Molecular Mass	48 kDa
AA Sequence	MRSTILLFCLLGSTRSLPQLKPALGLPPTKLAPDQGTLPNQQSNQVFPSSLIPLTQ MLTLGPDHLHLLNPAAGMTPGTQTHPLTLGGLNVQQQLHPHVLPFVFTQLGAQGTILS SEELPQIFTSLIIHSLFPGGILPTSQAGANPDVQDGSPLPAGGAGVNPATQGTPAGRLP TPSGTDDDFAVTTPAGIQRSTHAIEEATTESANGIQ
Applications	Enzyme-linked Immunoabsorbent Assay; Western Blot (Recombinant protein); Antibody Production; Protein Array

 Tel: 1-631-559-9269 1-516-512-3133

 Email: info@creative-biomart.com  Fax: 1-631-938-8127

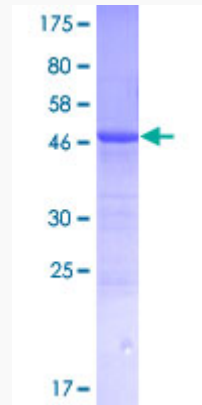
 45-1 Ramsey Road, Shirley, NY 11967, USA

Notes	Best use within three months from the date of receipt of this protein.
Storage	Store at -80 centigrade. Aliquot to avoid repeated freezing and thawing.
Storage Buffer	50 mM Tris-HCl, 10 mM reduced Glutathione, pH=8.0 in the elution buffer.
GENE INFORMATION	
Gene Name	AMTN amelotin [Homo sapiens]
Official Symbol	AMTN
Synonyms	UNQ689
Gene ID	401138
mRNA Refseq	NM_212557.2
Protein Refseq	NP_997722.1
MIM	610912
UniProt ID	Q6UX39

 Tel: 1-631-559-9269 1-516-512-3133

 Email: info@creative-biomart.com  Fax: 1-631-938-8127

 45-1 Ramsey Road, Shirley, NY 11967, USA



12.5% SDS-PAGE Stained with Coomassie Blue.

 Tel: 1-631-559-9269 1-516-512-3133

 Email: info@creative-biomart.com  Fax: 1-631-938-8127

 45-1 Ramsey Road, Shirley, NY 11967, USA