

Recombinant Human ANAPC11 protein, GST-tagged

Cat. No. ANAPC11-542H **Lot. No.** (See product label)

SPECIFICATION

Product Overview	Human ANAPC11 full-length ORF (AAH00607, 1 a.a. - 54 a.a.) recombinant protein with GST-tag at N-terminal.
Species	Human
Source	Wheat Germ
Description	ANAPC11 (Anaphase Promoting Complex Subunit 11) is a Protein Coding gene. Among its related pathways are HTLV-I infection and Activation of cAMP-Dependent PKA. GO annotations related to this gene include ubiquitin-protein transferase activity and ubiquitin-ubiquitin ligase activity.
Molecular Mass	31.68 kDa
AA Sequence	MGPGPVGKVPGDCCPLVWGQCSCFHMHCILKWLHAQQVQQHCPMCRQEWKFK E
Applications	Enzyme-linked Immunoabsorbent Assay; Western Blot (Recombinant protein); Antibody Production; Protein Array
Notes	Best use within three months from the date of receipt of this protein.
Storage	Store at -80 centigrade. Aliquot to avoid repeated freezing and thawing.
Storage Buffer	50 mM Tris-HCl, 10 mM reduced Glutathione, pH=8.0 in the elution buffer.

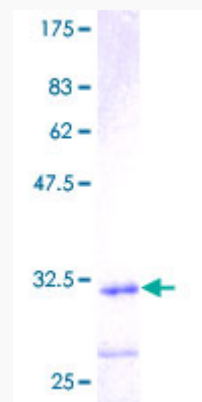
 Tel: 1-631-559-9269 1-516-512-3133

 Email: info@creative-biomart.com  Fax: 1-631-938-8127

 45-1 Ramsey Road, Shirley, NY 11967, USA

GENE INFORMATION

Gene Name	ANAPC11 anaphase promoting complex subunit 11 [Homo sapiens]
Official Symbol	ANAPC11
Synonyms	ANAPC11; anaphase promoting complex subunit 11; anaphase promoting complex subunit 11 (yeast APC11 homolog); anaphase-promoting complex subunit 11; APC11; Apc11p; HSPC214; MGC882; cyclosome subunit 11; APC11 anaphase promoting complex subunit 11 homolog; hepatocellular carcinoma-associated RING finger protein;
Gene ID	51529
mRNA Refseq	NM_001002244
Protein Refseq	NP_001002244
MIM	614534
UniProt ID	Q9NYG5



Tel: 1-631-559-9269 1-516-512-3133

Email: info@creative-biomart.com Fax: 1-631-938-8127

45-1 Ramsey Road, Shirley, NY 11967, USA



12.5% SDS-PAGE Stained with Coomassie Blue.

 Tel: 1-631-559-9269 1-516-512-3133

 Email: info@creative-biomart.com  Fax: 1-631-938-8127

 45-1 Ramsey Road, Shirley, NY 11967, USA