

Recombinant Human ANAPC2 protein, GST-tagged

Cat. No. ANAPC2-544H Lot. No. (See product label)

SPECIFICATION

Product Overview	Human ANAPC2 full-length ORF (AAH32503, 1 a.a. - 822 a.a.) recombinant protein with GST-tag at N-terminal.
Species	Human
Source	Wheat Germ
Description	A large protein complex, termed the anaphase-promoting complex (APC), or the cyclosome, promotes metaphase-anaphase transition by ubiquitinating its specific substrates such as mitotic cyclins and anaphase inhibitor, which are subsequently degraded by the 26S proteasome. Biochemical studies have shown that the vertebrate APC contains eight subunits. The composition of the APC is highly conserved in organisms from yeast to humans. The product of this gene is a component of the complex and shares sequence similarity with a recently identified family of proteins called cullins, which may also be involved in ubiquitin-mediated degradation. [provided by RefSeq, Jul 2008]
Molecular Mass	116.05 kDa
AA Sequence	MAAAVVVAEGDSDSRPGQELLVAWNTVSTGLVPPAALGLVSSRTSGAVPPKEEELR AAVEVLRGHGLHSVLEEFVVEVLQNDLQANISPEFWNAISQCENSADEPQCLLLLLD AFGLLESRLDPYLRSLLELLEKWTRLGLLMGTGAQGLREEVHTMLRGVLFSTPRTFQ EMIQRLYGCFRLRVYMQSKRKGEGGTDPELEGELDSRYARRRYRLLQSPLCAGCS SDKQQCWCRQALEQFHQLSQVLHRLSLLERVSAEAVTTTTLHQVTRERMEDRCRGE

 Tel: 1-631-559-9269 1-516-512-3133

 Email: info@creative-biomart.com  Fax: 1-631-938-8127

 45-1 Ramsey Road, Shirley, NY 11967, USA

YERSFLREFHKWIERVVGWLGKVFLQDGPASPASPEAGNTLRRWRCHVQRFFFYRI
 YASLRIEELFSIVRDFPDSRPAIEDLKYCLERTDQRQQLLVSLKAALETROLLHPGVNTC
 DIITLYISAIKALRVLDPSMVILEVACEPIRRYLRTREDTVRQIVAGLTGSDSDGTGDLAV
 ELSKTDPASLETGQDSEDDSGEPEDWVPDVPDADPGKSSSKRRSSDIISLLVSIYGS
 KDLFINEYRSLADROLLHQFSFSPEREIRNVELLKLRFGEAPMHFCEVMLKDMADSR
 RINANIREEDEKRPAAEQPPFGVYAVILSSEFWPPFKDEKLEVPEDIRAALEAYCKKY
 EQLKAMRTLSWKHTLGLVTMDVELADRTLSVAVTPVQAVILLYFQDQASWTLEELSK
 AVKMPVALLRRRMSVWLQQGVLREEPPGTFVIEEERPQDRDNMVLIDSDDES
 GMASQADQKEEELLLFWTYIQAMLTNLESLSLDRIYNMLRMFVVTGPALAEIDLQEL
 QGYLQKKVRDQQLVYSAGVYRLPKNCS

Applications

Enzyme-linked Immunoabsorbent Assay; Western Blot (Recombinant protein);
 Antibody Production; Protein Array

Notes

Best use within three months from the date of receipt of this protein.

Storage

Store at -80 centigrade. Aliquot to avoid repeated freezing and thawing.

Storage Buffer

50 mM Tris-HCl, 10 mM reduced Glutathione, pH=8.0 in the elution buffer.

GENE INFORMATION

Gene Name

[ANAPC2 anaphase promoting complex subunit 2 \[Homo sapiens \]](#)

Official Symbol

[ANAPC2](#)

Synonyms

ANAPC2; anaphase promoting complex subunit 2; anaphase-promoting complex subunit 2; APC2; KIAA1406; cyclosome subunit 2; RP11-350O14.5;

Gene ID

[29882](#)

 Tel: 1-631-559-9269 1-516-512-3133

 Email: info@creative-biomart.com  Fax: 1-631-938-8127

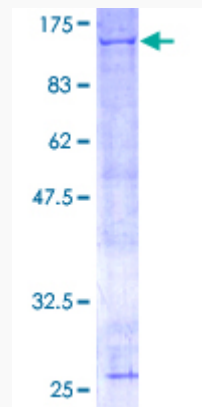
 45-1 Ramsey Road, Shirley, NY 11967, USA

mRNA Refseq [NM_013366](#)

Protein Refseq [NP_037498](#)

MIM [606946](#)

UniProt ID [Q9UJX6](#)



12.5% SDS-PAGE Stained with Coomassie Blue.

 Tel: 1-631-559-9269 1-516-512-3133

 Email: info@creative-biomart.com  Fax: 1-631-938-8127

 45-1 Ramsey Road, Shirley, NY 11967, USA