

Recombinant Human ANAPC4 protein, GST-tagged

Cat. No. ANAPC4-545H Lot. No. (See product label)

SPECIFICATION

Product Overview	Human ANAPC4 partial ORF (AAH59383, 651 a.a. - 750 a.a.) recombinant protein with GST-tag at N-terminal.
Species	Human
Source	Wheat Germ
Description	A large protein complex, termed the anaphase-promoting complex (APC), or the cyclosome, promotes metaphase-anaphase transition by ubiquitinating its specific substrates such as mitotic cyclins and anaphase inhibitor, which are subsequently degraded by the 26S proteasome. Biochemical studies have shown that the vertebrate APC contains eight subunits. The composition of the APC is highly conserved in organisms from yeast to humans. The exact function of this gene product is not known. Two transcript variants encoding different isoforms have been found for this gene. [provided by RefSeq, Nov 2013]
Molecular Mass	36.63 kDa
AA Sequence	VVLKDTVGREGRDLLVQLPLSLVYNSEDSAQFTGTYSTRLDEQCSAIPTRTMHF EKHWRLLESMAQYVAGNGFRKVSCLSSNLRHVRVFEMDIDD
Applications	Enzyme-linked Immunoabsorbent Assay; Western Blot (Recombinant protein); Antibody Production; Protein Array
Notes	Best use within three months from the date of receipt of this protein.

 Tel: 1-631-559-9269 1-516-512-3133

 Email: info@creative-biomart.com  Fax: 1-631-938-8127

 45-1 Ramsey Road, Shirley, NY 11967, USA

Storage Store at -80 centigrade. Aliquot to avoid repeated freezing and thawing.

Storage Buffer 50 mM Tris-HCl, 10 mM reduced Glutathione, pH=8.0 in the elution buffer.

GENE INFORMATION

Gene Name ANAPC4 anaphase promoting complex subunit 4 [Homo sapiens]

Official Symbol ANAPC4

Synonyms ANAPC4; anaphase promoting complex subunit 4; anaphase-promoting complex subunit 4; APC4; cyclosome subunit 4;

Gene ID 29945

mRNA Refseq NM_013367

Protein Refseq NP_037499

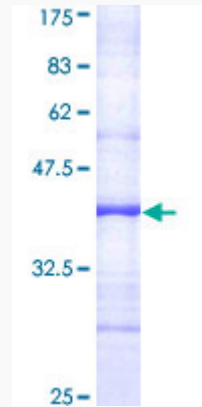
MIM 606947

UniProt ID Q9UJX5

 Tel: 1-631-559-9269 1-516-512-3133

 Email: info@creative-biomart.com  Fax: 1-631-938-8127

 45-1 Ramsey Road, Shirley, NY 11967, USA



12.5% SDS-PAGE Stained with Coomassie Blue.

 Tel: 1-631-559-9269 1-516-512-3133

 Email: info@creative-biomart.com  Fax: 1-631-938-8127

 45-1 Ramsey Road, Shirley, NY 11967, USA