

Recombinant Human ANAPC5 Protein (2-232 aa), GST-tagged

Cat. No. ANAPC5-1211H Lot. No. (See product label)

SPECIFICATION

Product Overview	Recombinant Human ANAPC5 Protein (2-232 aa) is produced by E. coli expression system. This protein is fused with a GST tag at the N-terminal. Research Area: Cell Cycle. Protein Description: Partial.
Species	Human
Source	E.coli
ProteinLength	2-232 aa
Description	Component of the anaphase promoting complex/cyclosome (APC/C), a cell cycle-regulated E3 ubiquitin ligase that controls progression through mitosis and the G1 phase of the cell cycle. The APC/C complex acts by mediating ubiquitination and subsequent degradation of target proteins: it mainly mediates the formation of 'Lys-11'-linked polyubiquitin chains and, to a lower extent, the formation of 'Lys-48'- and 'Lys-63'-linked polyubiquitin chains.
Form	Tris-based buffer,50% glycerol
Molecular Mass	53.2 kDa
AA Sequence	ASVHESLYFNPMNTNGVVHANVFGIKDWVTPYKIAVLVLLNEMSRTGEGAVSLMER RRLNQLLLPLLQGPDITLSKLYKLIEESCPQLANSVQIRIKLMAEGELKDMEQFFDLS DSFSGTEPEVHKTSVVGLFLRHMILAYSKLSFSQVFKLYTALQQYFQNGEKKTVEDA DMELTSRDEGERKMEKEELDVSVREEEVSCSGPLSQKQAEFFLSQQASLLKNDETK

 Tel: 1-631-559-9269 1-516-512-3133

 Email: info@creative-biomart.com  Fax: 1-631-938-8127

 45-1 Ramsey Road, Shirley, NY 11967, USA

	ALT
Purity	> 90% as determined by SDS-PAGE.
Notes	Repeated freezing and thawing is not recommended. Store working aliquots at 4 centigrade for up to one week.
Storage	The shelf life is related to many factors, storage state, buffer ingredients, storage temperature and the stability of the protein itself. Generally, the shelf life of liquid form is 6 months at -20 centigrade/-80 centigrade. The shelf life of lyophilized form is 12 months at -20 centigrade/-80 centigrade.
Concentration	A hardcopy of COA with reconstitution instruction is sent along with the products. Please refer to it for detailed information.

GENE INFORMATION

Gene Name	ANAPC5 anaphase promoting complex subunit 5 [Homo sapiens]
Official Symbol	ANAPC5
Synonyms	ANAPC5; APC5; cyclosome subunit 5;
Gene ID	51433
mRNA Refseq	NM_001137559
Protein Refseq	NP_001131031
MIM	606948

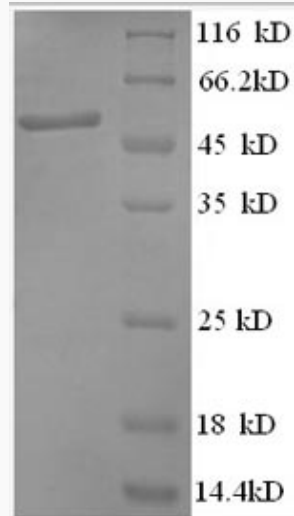
 Tel: 1-631-559-9269 1-516-512-3133

 Email: info@creative-biomart.com  Fax: 1-631-938-8127

 45-1 Ramsey Road, Shirley, NY 11967, USA

UniProt ID

Q9UJX4



(Tris-Glycine gel) Discontinuous SDS-PAGE (reduced) with 5% enrichment gel and 15% separation gel.

 Tel: 1-631-559-9269 1-516-512-3133

 Email: info@creative-biomart.com  Fax: 1-631-938-8127

 45-1 Ramsey Road, Shirley, NY 11967, USA