

Recombinant Human ANAPC5 Protein, Myc/DDK-tagged, C13 and N15-labeled

Cat. No. ANAPC5-5122H Lot. No. (See product label)

SPECIFICATION

| | |
|-------------------------|---|
| Product Overview | ANAPC5 MS Standard C13 and N15-labeled recombinant protein (NP_057321) with a C-terminal MYC/DDK tag, was expressed in HEK293 cells. |
| Species | Human |
| Source | HEK293 |
| Description | <p>This gene encodes a tetratricopeptide repeat-containing component of the anaphase promoting complex/cyclosome (APC/C), a large E3 ubiquitin ligase that controls cell cycle progression by targeting a number of cell cycle regulators such as B-type cyclins for 26S proteasome-mediated degradation through ubiquitination. The encoded protein is required for the proper ubiquitination function of APC/C and for the interaction of APC/C with transcription coactivators. It also interacts with polyA binding protein and represses internal ribosome entry site-mediated translation. Multiple transcript variants encoding different isoforms have been found for this gene. These differences cause translation initiation at a downstream AUG and result in a shorter protein (isoform b), compared to isoform a.</p> |
| Molecular Mass | 85.1 kDa |
| AA Sequence | MASVHESLYFNPMMTNGVVHANVFGIKDWVTPYKIAVLVLLNEMSRTGEGAVSLME RRRLNQLLLPLLQGPDITLSKLYKLIEESCPQLANSVQIRIKLMAEGELKDMEQFFDDL SDSFSGTEPEVHKTSVVGLFLRHMILAYSKLSFSQVFKLYTALQQYFQNGEKKTVED |

 Tel: 1-631-559-9269 1-516-512-3133

 Email: info@creative-biomart.com  Fax: 1-631-938-8127

 45-1 Ramsey Road, Shirley, NY 11967, USA

ADMELTSRDEGERKMEKEELDVSVREEEVSCSGPLSQKQAEFFLSQQASLLKND
 KALTPASLQKELNLLKFNPDFAEAHYLSYLNLRVQDVFSSTHSLLHYFDRLILTGA
 ESKSNGEEGYGRSLRYAALNLAALHCRFGHYQQAELALQEAIRIAQESNDHVCLQH
 CLSWLYVLGQKRSDSYVLEHSVKKAVHFGLPYLASLGIQSLVQQRAFAGKTANKL
 MDALKDSDLLHWKHSLSLIDISIAQKTAIWRLYGRSTMALQQAQMLLSMNSLEAVN
 AGVQQNNTESFAVALCHLAELHAEQGCFAAASEVLKHLKERFPPNSQHAQLWMLC
 DQKIQFDRAMNDGKYHLADSLVTGITALNSIEGVYRKAVVLQAQNMSEAHKLLQKL
 LVHCQKLNTEMVISVLLSVAELYWRSSSPTIALPMLLQALALSKEYRLQYLASETVL
 NLAFAQLILGIPEQALSLLHMAIEPILADGAILDKGRAMFLVAKCQVASAASYDQPKKA
 EALEAAIENLNEAKNYFAKVDCKERIRDVVYFQARLYHTLGKTQERNRCAMLFRQLH
 QELPSHGVPLINHLTRTRPLEQKLISEEDLAANDILDYKDDDDKV

Purity > 80% as determined by SDS-PAGE and Coomassie blue staining

Stability Stable for 3 months from receipt of products under proper storage and handling conditions.

Storage Store at -80 centigrade. Avoid repeated freeze-thaw cycles.

Concentration 50 µg/mL as determined by BCA

Storage Buffer 100 mM glycine, 25 mM Tris-HCl, pH 7.3.

GENE INFORMATION

Gene Name ANAPC5 anaphase promoting complex subunit 5 [Homo sapiens (human)]

Official Symbol ANAPC5

Synonyms ANAPC5; anaphase promoting complex subunit 5; anaphase-promoting complex subunit 5; APC5; cyclosome subunit 5;

 Tel: 1-631-559-9269 1-516-512-3133

 Email: info@creative-biomart.com  Fax: 1-631-938-8127

 45-1 Ramsey Road, Shirley, NY 11967, USA

Gene ID 51433

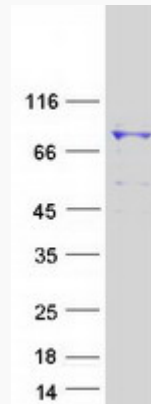
mRNA Refseq [NM_016237](#)

Protein Refseq [NP_057321](#)

MIM 606948

UniProt ID [Q9UJX4](#)

SDS-PAGE



 Tel: 1-631-559-9269 1-516-512-3133

 Email: info@creative-biomart.com  Fax: 1-631-938-8127

 45-1 Ramsey Road, Shirley, NY 11967, USA