

## Recombinant Human ANAPC5 protein, GST-tagged

Cat. No. ANAPC5-546H Lot. No. (See product label)

### SPECIFICATION

<b>Product Overview</b>	Human ANAPC5 full-length ORF ( NP_057321.2, 1 a.a. - 755 a.a.) recombinant protein with GST-tag at N-terminal.
<b>Species</b>	Human
<b>Source</b>	Wheat Germ
<b>Description</b>	<p>This gene encodes a tetratricopeptide repeat-containing component of the anaphase promoting complex/cyclosome (APC/C), a large E3 ubiquitin ligase that controls cell cycle progression by targeting a number of cell cycle regulators such as B-type cyclins for 26S proteasome-mediated degradation through ubiquitination. The encoded protein is required for the proper ubiquitination function of APC/C and for the interaction of APC/C with transcription coactivators. It also interacts with polyA binding protein and represses internal ribosome entry site-mediated translation. Multiple transcript variants encoding different isoforms have been found for this gene. These differences cause translation initiation at a downstream AUG and result in a shorter protein (isoform b), compared to isoform a. [provided by RefSeq, Nov 2008]</p>
<b>Molecular Mass</b>	111.5 kDa
<b>AA Sequence</b>	<p>MASVHESLYFNPMMTNGVVHANVFGIKDWVTPYKIAVLVLLNEMSRTGEGAVSLME  RRRLNQLLLPLLQGPDITLSKLYKLIEESCPQLANSVQIRIKLMAEGELKDMEQFFDDL  SDSFSGTEPEVHKTSVVGLFLRHMILAYSKLSFSQVFKLYTALQQYFQNGEKKTVED  ADMELTSRDEGERKMEKEELDVSVREEEVSCSGPLSQKQAEFFLSQQASLLKNDET</p>

 Tel: 1-631-559-9269 1-516-512-3133

 Email: [info@creative-biomart.com](mailto:info@creative-biomart.com)  Fax: 1-631-938-8127

 45-1 Ramsey Road, Shirley, NY 11967, USA

KALTPASLQKELNLLKFNPDFAEAHYLSYLNLRVQDVFSSTHSLHLYFDRILITGA  
 ESKSNGEEGYGRSLRYAALNLAALHCRFGHYQQAELALQEAIRAQESNDHVCLQH  
 CLSWLYVLGQKRSDSYVLEHSVKKAVHFGLPYLASLGIQSLVQQRAFAGKTANKL  
 MDALKDSDLLHWKHSLSLIDISIAQKTAIWRLYGRSTMALQQAQMLLSMNSLEAVN  
 AGVQQNNTESFAVALCHLAELHAEQGCFAAASEVLKHLKERFPPNSQHAQLWMLC  
 DQKIQFDRAMNDGKYHLADSLVTGITALNSIEGVYRKAVVLQAQNMSEAHKLLQKL  
 LVHCQKLNTEMVISVLLSVAELYWRSSSPTIALPMLLQALALSKEYRLQYLASETVL  
 NLAFAQLILGIPEQALSLLHMAIEPILADGAILDKGRAMFLVAKCQVASAASYDQPKKA  
 EALEAAIENLNEAKNYFAKVDCKERIRDVVYFQARLYHTLGKTQERNRCAMLFRQLH  
 QELPSHGVPLINHL

**Applications**

Enzyme-linked Immunoabsorbent Assay; Western Blot (Recombinant protein);  
 Antibody Production; Protein Array

**Notes**

Best use within three months from the date of receipt of this protein.

**Storage**

Store at -80 centigrade. Aliquot to avoid repeated freezing and thawing.

**Storage Buffer**

50 mM Tris-HCl, 10 mM reduced Glutathione, pH=8.0 in the elution buffer.

## GENE INFORMATION

**Gene Name**

[ANAPC5 anaphase promoting complex subunit 5 \[ Homo sapiens \]](#)

**Official Symbol**

[ANAPC5](#)

**Synonyms**

ANAPC5; anaphase promoting complex subunit 5; anaphase-promoting complex subunit 5; APC5; cyclosome subunit 5;

**Gene ID**

[51433](#)

 Tel: 1-631-559-9269 1-516-512-3133

 Email: [info@creative-biomart.com](mailto:info@creative-biomart.com)  Fax: 1-631-938-8127

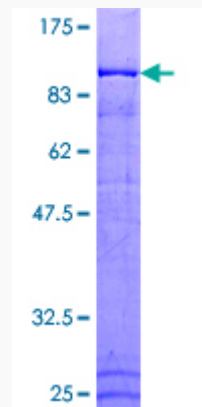
 45-1 Ramsey Road, Shirley, NY 11967, USA

mRNA Refseq [NM\\_001137559](#)

Protein Refseq [NP\\_001131031](#)

MIM [606948](#)

UniProt ID [Q9UJX4](#)



12.5% SDS-PAGE Stained with Coomassie Blue.

 Tel: 1-631-559-9269 1-516-512-3133

 Email: [info@creative-biomart.com](mailto:info@creative-biomart.com)  Fax: 1-631-938-8127

 45-1 Ramsey Road, Shirley, NY 11967, USA