

Recombinant Full Length Human ANAPC5 Protein, C-Flag-tagged

Cat. No. ANAPC5-628HFL **Lot. No.** (See product label)

SPECIFICATION

Product Overview	Recombinant Full Length Human ANAPC5 Protein, fused to Flag-tag at C-terminus, was expressed in Mammalian cells.
Species	Human
Source	Mammalian Cells
Description	<p>This gene encodes a tetratricopeptide repeat-containing component of the anaphase promoting complex/cyclosome (APC/C), a large E3 ubiquitin ligase that controls cell cycle progression by targeting a number of cell cycle regulators such as B-type cyclins for 26S proteasome-mediated degradation through ubiquitination. The encoded protein is required for the proper ubiquitination function of APC/C and for the interaction of APC/C with transcription coactivators. It also interacts with polyA binding protein and represses internal ribosome entry site-mediated translation. Multiple transcript variants encoding different isoforms have been found for this gene. These differences cause translation initiation at a downstream AUG and result in a shorter protein (isoform b), compared to isoform a.</p>
Form	25 mM Tris HCl, pH 7.3, 100 mM glycine, 10% glycerol.
Molecular Mass	84.9 kDa
AA Sequence	MASVHESLYFNPMMTNGVVHANVFGIKDWVTPYKIAVLVLLNEMSRTGEGAVSLME RRRLNQLLLPLLQG PDITLSKLYKLIIEESCPQLANSVQIRIKLMAEGELKDMEQFFDD

 Tel: 1-631-559-9269 1-516-512-3133

 Email: info@creative-biomart.com  Fax: 1-631-938-8127

 45-1 Ramsey Road, Shirley, NY 11967, USA

LSDSFSGTEPEVHKTSVVGLFLRHMI LAYSKLSFSQVFKLYTALQQYFQNGEKKTVE
 DADMELTSRDEGERKMEKEELDVSVREEEVSCSGPLSQK QAEFFLSQQASLLKND
 ETKALTPASLQKELNNLLKFNPDFAEAHYLSYLNLRVQDVFSSHLLHYFDR LILT
 GAESKSNGEEGYGRSLRYAALNLAALHCRFGHYQQAELALQEAIRIAQESNDHVCL
 QHCLSWLYVL GQKRSDSYVLEHSVKKAVHFGLPYLASLGIQSLVQQRAFAGKTAN
 KLMDALKDSDLLHWKHSLSELIDI SIAQKTAIWRLYGRSTMALQQAQMLLSMNSLEA
 VNAGVQQNNTESFAVALCHLAELHAEQGCFAAASEVL KHLKERFPPNSQHAQLWM
 LCDQKIQFDRAMNDGKYHLADSLVTGITALNSIEGVYRKAVVLQAQNMSEA HKLL
 QKLLVHCQKLNTEMVISVLLSVAELYWRSSSPTIALPMLLQALALSKEYRLQYLASE
 TVLNLFA QILIGIPEQALSLLHMAIEPILADGAILDKGRAMFLVAKCQVASAASYDQP
 KKAEALEAAIENLNEAKNY
 FAKVDCKERIRDVVYFQARLYHTLGKTQERNRCAMLFRQLHQELPSHGVPINHLTR
 TRPLEQKLISEEDLAANDILDYKDDDDKV

Purity	> 80% as determined by SDS-PAGE and Coomassie blue staining.
Stability	Stable for 12 months from the date of receipt of the product under proper storage and handling conditions. Avoid repeated freeze-thaw cycles.
Storage	Store at -80 centigrade.
Concentration	>50 ug/mL as determined by microplate BCA method.
Preparation	Recombinant protein was captured through anti-DDK affinity column followed by conventional chromatography steps.
Protein Families	Druggable Genome
Protein Pathways	Cell cycle, Oocyte meiosis, Progesterone-mediated oocyte maturation, Ubiquitin mediated proteolysis

 Tel: 1-631-559-9269 1-516-512-3133

 Email: info@creative-biomart.com
 Fax: 1-631-938-8127

 45-1 Ramsey Road, Shirley, NY 11967, USA

Full Length Full L.

GENE INFORMATION

Gene Name [ANAPC5 anaphase promoting complex subunit 5 \[Homo sapiens \(human\) \]](#)

Official Symbol [ANAPC5](#)

Synonyms [APC5](#)

Gene ID [51433](#)

mRNA Refseq [NM_016237.5](#)

Protein Refseq [NP_057321.2](#)

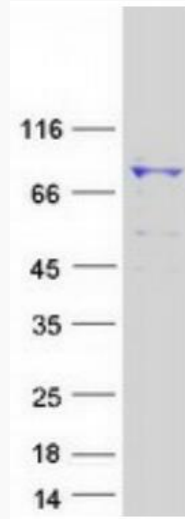
MIM [606948](#)

UniProt ID [Q9UJX4](#)

 Tel: 1-631-559-9269 1-516-512-3133

 Email: info@creative-biomart.com  Fax: 1-631-938-8127

 45-1 Ramsey Road, Shirley, NY 11967, USA



Coomassie blue staining of purified ANAPC5 protein.

 Tel: 1-631-559-9269 1-516-512-3133

 Email: info@creative-biomart.com  Fax: 1-631-938-8127

 45-1 Ramsey Road, Shirley, NY 11967, USA