

Recombinant Human ANG Protein, Myc/DDK-tagged, C13 and N15-labeled

Cat. No. ANG-1424H **Lot. No.** (See product label)

SPECIFICATION

Product Overview	ANG MS Standard C13 and N15-labeled recombinant protein (NP_001136) with a C-terminal MYC/DDK tag, was expressed in HEK293 cells.
Species	Human
Source	HEK293
Description	The protein encoded by this gene is an exceedingly potent mediator of new blood vessel formation. It hydrolyzes cellular tRNAs resulting in decreased protein synthesis and is similar to pancreatic ribonuclease. In addition, the mature peptide has antimicrobial activity against some bacteria and fungi, including <i>S. pneumoniae</i> and <i>C. albicans</i> . Alternative splicing results in two transcript variants encoding the same protein. This gene and the gene that encodes ribonuclease, RNase A family, 4 share promoters and 5' exons. Each gene splices to a unique downstream exon that contains its complete coding region.
Molecular Mass	16.6 kDa
AA Sequence	MVMGLGVLLLVFVLGGLTPPTLAQDNSRYTHFLTQHDAKPQGRDDRYCESIMRR RGLTSPCKDINTFIHGNKRSIKAICENKNGNPHRENLRISKSSFQVTTCKLHGGSPWP PCQYRATAGFRNVVACENGLPVHLDQSIFRRPTRTRPLEQKLISEEDLAANDILDYK DDDDKV
Purity	> 80% as determined by SDS-PAGE and Coomassie blue staining

 Tel: 1-631-559-9269 1-516-512-3133

 Email: info@creative-biomart.com  Fax: 1-631-938-8127

 45-1 Ramsey Road, Shirley, NY 11967, USA

Stability	Stable for 3 months from receipt of products under proper storage and handling conditions.
Storage	Store at -80 centigrade. Avoid repeated freeze-thaw cycles.
Concentration	50 µg/mL as determined by BCA
Storage Buffer	100 mM glycine, 25 mM Tris-HCl, pH 7.3.

GENE INFORMATION

Gene Name	ANG angiogenin [Homo sapiens (human)]
Official Symbol	ANG
Synonyms	ANG; angiogenin, ribonuclease, RNase A family, 5; angiogenin; RNASE5; RNase 5; ribonuclease 5; epididymis luminal protein 168; ALS9; HEL168; RNASE4; MGC22466; MGC71966;
Gene ID	283
mRNA Refseq	NM_001145
Protein Refseq	NP_001136
MIM	105850
UniProt ID	P03950

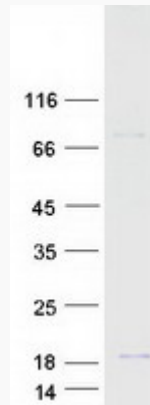
 Tel: 1-631-559-9269 1-516-512-3133

 Email: info@creative-biomart.com  Fax: 1-631-938-8127

 45-1 Ramsey Road, Shirley, NY 11967, USA



SDS-PAGE



Tel: 1-631-559-9269 1-516-512-3133

Email: info@creative-biomart.com Fax: 1-631-938-8127

45-1 Ramsey Road, Shirley, NY 11967, USA