

Recombinant Cattle ANG protein, His-tagged

Cat. No. ANG-518C Lot. No. (See product label)

SPECIFICATION

Product Overview	Recombinant Cattle ANG (Q2NKV1) aa. (Ala24~His148) fused with N-terminal His tag was produced in E. coli cells.
Species	Cattle
Source	E.coli
ProteinLength	Ala24~His148
Form	Freeze-dried powder
Molecular Mass	18kDa as determined by SDS-PAGE reducing conditions
Endotoxin	<1.0EU per 1g (determined by the LAL method)
Purity	> 98%
Characteristic	The isoelectric point is 9.2.
Applications	SDS-PAGE; WB; ELISA; IP; CoIP; ReporterAssays; Purification; Amine Reactive Labeling
Stability	The thermal stability is described by the loss rate. The loss rate was determined by accelerated thermal degradation test, that is, incubate the protein at 37°C for 48h, and no obvious degradation and precipitation were observed. The loss rate is less

 Tel: 1-631-559-9269 1-516-512-3133

 Email: info@creative-biomart.com  Fax: 1-631-938-8127

 45-1 Ramsey Road, Shirley, NY 11967, USA

than 5% within the expiration date under appropriate storage condition.

Storage

Avoid repeated freeze/thaw cycles. Store at 2-8°C for one month. Aliquot and store at -80°C for 12 months.

Concentration

200g/mL

Storage buffer

20mM Tris, 150mM NaCl, pH8.0, containing 1mM EDTA, 1mM DTT, 0.01% sarcosyl, 5%Trehalose and Proclin300.

Reconstitution

Reconstitute in 20mM Tris, 150mM NaCl (pH8.0) to a concentration of 0.1-1.0 mg/mL.
Do not vortex

GENE INFORMATION

Gene Name

ANG angiogenin, ribonuclease, RNase A family, 5 [Bos taurus (cattle)]

Official Symbol

ANG

Synonyms

ANG; angiogenin, ribonuclease, RNase A family, 5; ANG1; RAA1; angiogenin-1; ribonuclease A A1

Gene ID

777597

mRNA Refseq

NM_001078144.1

Protein Refseq

NP_001071612.1

UniProt ID

Q2NKV1

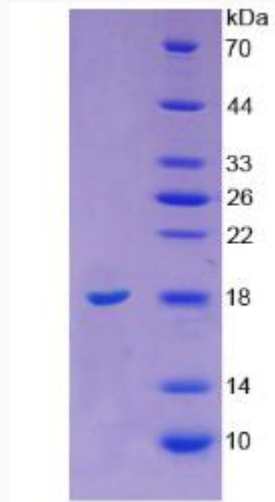
 Tel: 1-631-559-9269 1-516-512-3133

 Email: info@creative-biomart.com  Fax: 1-631-938-8127

 45-1 Ramsey Road, Shirley, NY 11967, USA



SDS-PAGE



Tel: 1-631-559-9269 1-516-512-3133

Email: info@creative-biomart.com Fax: 1-631-938-8127

45-1 Ramsey Road, Shirley, NY 11967, USA