

## Recombinant Human ANG protein, GST-tagged

**Cat. No.** ANG-548H    **Lot. No.** (See product label)

### SPECIFICATION

<b>Product Overview</b>	Human ANG full-length ORF ( AAH54880, 25 a.a. - 147 a.a.) recombinant protein with GST-tag at N-terminal.
<b>Species</b>	Human
<b>Source</b>	Wheat Germ
<b>Description</b>	The protein encoded by this gene is an exceedingly potent mediator of new blood vessel formation. It hydrolyzes cellular tRNAs resulting in decreased protein synthesis and is similar to pancreatic ribonuclease. In addition, the mature peptide has antimicrobial activity against some bacteria and fungi, including <i>S. pneumoniae</i> and <i>C. albicans</i> . Alternative splicing results in two transcript variants encoding the same protein. This gene and the gene that encodes ribonuclease, RNase A family, 4 share promoters and 5' exons. Each gene splices to a unique downstream exon that contains its complete coding region. [provided by RefSeq, Aug 2014]
<b>Molecular Mass</b>	39.27 kDa
<b>AA Sequence</b>	QDNSRYTHFLTQHYDAKPQGRDDRYCESIMRRRGLTSPCKDINTFIHGKRSIKAIC ENKNGNPHRENLRISKSSFQVTTCKLHGGSPWPPCQYRATAGFRNVVVACENGLP VHLDQSIFRRP
<b>Applications</b>	Enzyme-linked Immunoabsorbent Assay; Western Blot (Recombinant protein); Antibody Production; Protein Array

 Tel: 1-631-559-9269    1-516-512-3133

 Email: [info@creative-biomart.com](mailto:info@creative-biomart.com)     Fax: 1-631-938-8127

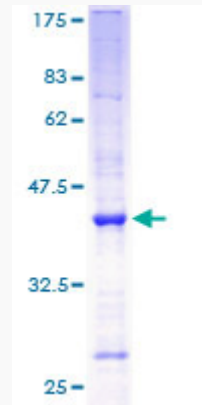
 45-1 Ramsey Road, Shirley, NY 11967, USA

<b>Notes</b>	Best use within three months from the date of receipt of this protein.
<b>Storage</b>	Store at -80 centigrade. Aliquot to avoid repeated freezing and thawing.
<b>Storage Buffer</b>	50 mM Tris-HCl, 10 mM reduced Glutathione, pH=8.0 in the elution buffer.
<b>GENE INFORMATION</b>	
<b>Gene Name</b>	ANG angiogenin, ribonuclease, RNase A family, 5 [ Homo sapiens ]
<b>Official Symbol</b>	ANG
<b>Synonyms</b>	ANG; angiogenin, ribonuclease, RNase A family, 5; angiogenin; RNASE5; RNase 5; ribonuclease 5; epididymis luminal protein 168; ALS9; HEL168; RNASE4; MGC22466; MGC71966;
<b>Gene ID</b>	283
<b>mRNA Refseq</b>	NM_001097577
<b>Protein Refseq</b>	NP_001091046
<b>MIM</b>	105850
<b>UniProt ID</b>	P03950

 Tel: 1-631-559-9269 1-516-512-3133

 Email: [info@creative-biomart.com](mailto:info@creative-biomart.com)  Fax: 1-631-938-8127

 45-1 Ramsey Road, Shirley, NY 11967, USA



12.5% SDS-PAGE Stained with Coomassie Blue.

Tel: 1-631-559-9269 1-516-512-3133

Email: [info@creative-biomart.com](mailto:info@creative-biomart.com) Fax: 1-631-938-8127

45-1 Ramsey Road, Shirley, NY 11967, USA