

Recombinant Bovine ANG1 Protein (24-148 aa), His-tagged

Cat. No. ANG1-1276B Lot. No. (See product label)

SPECIFICATION

Product Overview	Recombinant Bovine ANG1 Protein (24-148 aa) is produced by E. coli expression system. This protein is fused with a 6xHis tag at the N-terminal. Protein Description: Full Length of Mature Protein.
Species	Bovine
Source	E.coli
ProteinLength	24-148 aa
Description	Binds to actin on the surface of endothelial cells; once bound, angiogenin is endocytosed and translocated to the nucleus. Stimulates ribosomal RNA synthesis including that containing the initiation site sequences of 45S rRNA. Cleaves tRNA within anticodon loops to produce tRNA-derived stress-induced fragments (tiRNAs) which inhibit protein synthesis and triggers the assembly of stress granules (SGs). Angiogenin induces vascularization of normal and malignant tissues. Angiogenic activity is regulated by interaction with RNH1 in vivo. Has very low ribonuclease activity.
Form	Tris-based buffer, 50% glycerol
Molecular Mass	18.6 kDa
AA Sequence	AQDDYRYIHFLTQHLYDAKPKGRNDEYCFNMMKNRRLTRPCKDRNTFIHGNKNDIKAI CEDRNGQPYRGDLRISKSEFQITICKHKGGSSRPPCRYGATEDSRVIVVGCENGLPV

 Tel: 1-631-559-9269 1-516-512-3133

 Email: info@creative-biomart.com  Fax: 1-631-938-8127

 45-1 Ramsey Road, Shirley, NY 11967, USA

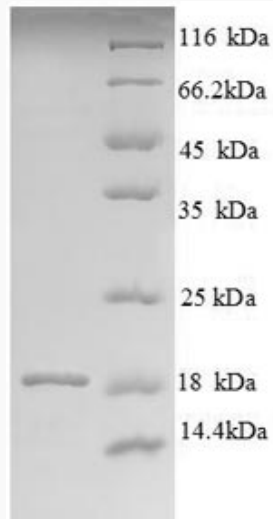


	HFDESFITPRH
Purity	> 90% as determined by SDS-PAGE.
Notes	Repeated freezing and thawing is not recommended. Store working aliquots at 4 centigrade for up to one week.
Storage	The shelf life is related to many factors, storage state, buffer ingredients, storage temperature and the stability of the protein itself. Generally, the shelf life of liquid form is 6 months at -20 centigrade/-80 centigrade. The shelf life of lyophilized form is 12 months at -20 centigrade/-80 centigrade.
Concentration	A hardcopy of COA with reconstitution instruction is sent along with the products. Please refer to it for detailed information.
GENE INFORMATION	
Synonyms	ANG1;
UniProt ID	P10152

Tel: 1-631-559-9269 1-516-512-3133

Email: info@creative-biomart.com Fax: 1-631-938-8127

45-1 Ramsey Road, Shirley, NY 11967, USA



(Tris-Glycine gel) Discontinuous SDS-PAGE (reduced) with 5% enrichment gel and 15% separation gel.

 Tel: 1-631-559-9269 1-516-512-3133

 Email: info@creative-biomart.com  Fax: 1-631-938-8127

 45-1 Ramsey Road, Shirley, NY 11967, USA