

Recombinant Human ANGEL1 Protein, Myc/DDK-tagged, C13 and N15-labeled

Cat. No. ANGEL1-2932H **Lot. No.** (See product label)

SPECIFICATION

Product Overview

ANGEL1 MS Standard C13 and N15-labeled recombinant protein (NP_056120) with a C-terminal MYC/DDK tag, was expressed in HEK293 cells.

Species

Human

Source

HEK293

Description

ANGEL1 (Angel Homolog 1) is a Protein Coding gene. Diseases associated with ANGEL1 include Arrhythmogenic Right Ventricular Dysplasia, Familial, 9. An important paralog of this gene is ANGEL2.

Molecular Mass

75.2 kDa

AA Sequence

MIASCLCYLLL PATRLFRALSDAFFTCRKNVLLANSSSPQVEGDFAMAPRGPEQEEC
 EGLLQQWREEGLSQVLSTASEGPLIDKGLAQSSLALLMDNPGEENAASEDRWSSR
 QLSDLRAAENLDEPFPEMLGEEPLLEVEGVEGSMWAAIPMQSEPQYADCAALPVGA
 LATEQWEEDPAVLAWLSIAPEPVPQEEASIWPFEGLGQLQPPAVEIPYHEILWREWE
 DFSTQPDAQGLKAGDGPQFQFTLMSYNILAQDLMQQSSELYLHCHPDILNWNRYRFV
 NLMQEFQHWDPDILCLQEVDHYWEQLEPSLRMMGFTCFYKRRTGCKTDGCAV
 CYKPTRFRLLCASPVEYFRPGLELLNRDNVGLVLLQPLVPEGLGQVSVAPLCVANT
 HILYNPRRGDVKLAQMAILLAEVGKVARLSDGSHCPIILCGDLNSVPDSPLYNFIRDG
 ELQYHGMPAWKVSGQEDFSHQLYQRKLQAPLWPSSLGITDCCQYVTSCHPKR SER
 RKYGRDFLLRFRFCSIACQRPVGLVLMEGVTDTKPERPAGWAESVLEEDASELEPA

 Tel: 1-631-559-9269 1-516-512-3133

 Email: info@creative-biomart.com  Fax: 1-631-938-8127

 45-1 Ramsey Road, Shirley, NY 11967, USA

FSRTVGTIQHCLHLTSVYTHFLPQRGRPEVTTMPLGLGMTVDYIFFSAESCENGRNRT
 DHRLYRDGTLKLLGRLSLLSEEILWAANGLPNPFCSSDHLCLLASFGMEVTAPTRTR
 PLEQKLISEEDLAANDILDYKDDDDKV

Purity > 80% as determined by SDS-PAGE and Coomassie blue staining

Stability Stable for 3 months from receipt of products under proper storage and handling conditions.

Storage Store at -80 centigrade. Avoid repeated freeze-thaw cycles.

Concentration 50 µg/mL as determined by BCA

Storage Buffer 100 mM glycine, 25 mM Tris-HCl, pH 7.3.

GENE INFORMATION

Gene Name [ANGEL1 angel homolog 1 \[Homo sapiens \(human\) \]](#)

Official Symbol [ANGEL1](#)

Synonyms ANGEL1; angel homolog 1 (Drosophila); KIAA0759; protein angel homolog 1; FLJ60172;

Gene ID [23357](#)

mRNA Refseq [NM_015305](#)

Protein Refseq [NP_056120](#)

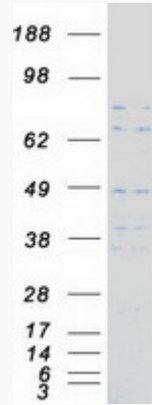
UniProt ID [Q9UNK9](#)

 Tel: 1-631-559-9269 1-516-512-3133

 Email: info@creative-biomart.com  Fax: 1-631-938-8127

 45-1 Ramsey Road, Shirley, NY 11967, USA

SDS-PAGE



 Tel: 1-631-559-9269 1-516-512-3133

 Email: info@creative-biomart.com  Fax: 1-631-938-8127

 45-1 Ramsey Road, Shirley, NY 11967, USA