

## Recombinant Dog ANGPT1 protein, His-tagged

Cat. No. ANGPT1-3222D Lot. No. (See product label)

### SPECIFICATION

<b>Product Overview</b>	Recombinant Dog ANGPT1 protein(Q60FC1)(20-497aa), fused with C-terminal His tag, was expressed in Insect cells.
<b>Species</b>	Dog
<b>Source</b>	Insect cells
<b>ProteinLength</b>	20-497aa
<b>Tag</b>	C-His
<b>Form</b>	If the delivery form is liquid, the default storage buffer is Tris/PBS-based buffer, 5%-50% glycerol. If the delivery form is lyophilized powder, the buffer before lyophilization is Tris/PBS-based buffer, 6% Trehalose, pH 8.0.
<b>Molecular Mass</b>	58.9 kDa
<b>Purity</b>	Greater than 85% as determined by SDS-PAGE.
<b>Storage</b>	Store at -20°C/-80°C upon receipt, aliquoting is necessary for mutiple use. Avoid repeated freeze-thaw cycles.
<b>Reconstitution</b>	We recommend that this vial be briefly centrifuged prior to opening to bring the contents to the bottom. Please reconstitute protein in deionized sterile water to a concentration of 0.1-1.0 mg/mL. We recommend to add 5-50% of glycerol (final

 Tel: 1-631-559-9269 1-516-512-3133

 Email: [info@creative-biomart.com](mailto:info@creative-biomart.com)  Fax: 1-631-938-8127

 45-1 Ramsey Road, Shirley, NY 11967, USA

concentration) and aliquot for long-term storage at -20°C/-80°C.

**AA Sequence**


SNQRRSPENGGRRYNRIQHGGCAYTFILPEHDGNCRESTTDQYNTNALQRDAPHV  
 GPDFSSQKLQHLEHVMEYNTQWLQKIENYIVENMKSEMAQIQQNAVQNHTATMLEI  
 GTSLLSQTAEQTRKLTDVETQVLNQTSRLEIQLLNSLSTYKLEKQLLQQTNEILKIHE  
 KNSLLEHKILEMEGKHKEEWDTLKEERENLQVLVTRQTYIIQELEKQLNRATNNNSVL  
 QKQQLELMDTVHNLVNLCTKEVLLKGGKKEEEKPFRDCADVYQAGFNKSGIYTIYIN  
 NMPEPKKVFNCMDVNGGGWTVIQHREDGSLDFQRGWKEYKMGFGNPSGEYWLG  
 NEFIFAITSQRQYTLRIELMDCEGNRAYSQYDRFHIGNEKQNYRLYLKCHTGTAGKQ  
 SSLILHGADFSTKDADNDNCMCKCALMLTGGWWFDACGPSNLNGMFYTAGQNHG  
 KLNGIKWHYFKGPSYSLSRSTTMMIRPLDF

## GENE INFORMATION

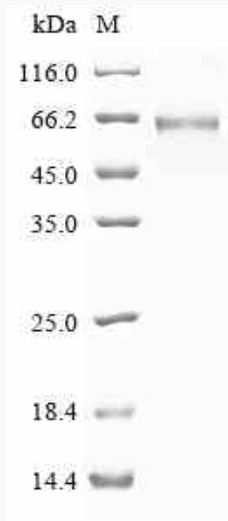
<b>Gene Name</b>	ANGPT1 angiotensinogen 1 [ <i>Canis lupus familiaris</i> ]
<b>Official Symbol</b>	ANGPT1
<b>Synonyms</b>	ANGPT1; angiotensinogen 1; angiotensinogen-1; ANG-1; ANG1;
<b>Gene ID</b>	403656
<b>mRNA Refseq</b>	NM_001005754
<b>Protein Refseq</b>	NP_001005754

 Tel: 1-631-559-9269 1-516-512-3133

 Email: [info@creative-biomart.com](mailto:info@creative-biomart.com)  Fax: 1-631-938-8127

 45-1 Ramsey Road, Shirley, NY 11967, USA

**SDS-PAGE**



 Tel: 1-631-559-9269 1-516-512-3133

 Email: [info@creative-biomart.com](mailto:info@creative-biomart.com)  Fax: 1-631-938-8127

 45-1 Ramsey Road, Shirley, NY 11967, USA