

Recombinant Pig ANGPT2 Protein, N-His tagged

Cat. No. ANGPT2-01P Lot. No. (See product label)

SPECIFICATION

Product Overview	Recombinant Pig ANGPT2 Protein with N-His tag was expressed in Mammalian cell.
Species	Pig
Source	Mammalian Cells
Description	Binds to TEK/TIE2, competing for the ANGPT1 binding site, and modulating ANGPT1 signaling. Can induce tyrosine phosphorylation of TEK/TIE2 in the absence of ANGPT1. In the absence of angiogenic inducers, such as VEGF, ANGPT2-mediated loosening of cell-matrix contacts may induce endothelial cell apoptosis with consequent vascular regression. In concert with VEGF, it may facilitate endothelial cell migration and proliferation, thus serving as a permissive angiogenic signal. Involved in the regulation of lymphangiogenesis.
Molecular Mass	56 kDa
AA Sequence	<p>HHHHHHHHYNNFRKSMSTGKRQYQVQHGPCSYTFLLPETDNCRSPSSSYVSNVAV QRDAPLDYDDSVRRLQVLENIMENNTQWLMKLESYIQDNMKKEMVEIQQNAVQNQ TAVMIEIGTNLLNQTAEQTRKLTQVLAQVNLQTTRELEQLLEHSLSTNKLEKQILDQTS EINKLQDKNSFLEKKVLDMEDKHIVQLQSIKEEKDQLQVLVSKQNSIIIELEKQLVTAT VNNSVLQKQQHDLMETVHNLMTMISTSNSAKHSLVAKEEQIIFRDCAEAFKSGLTTS GTYTLPNSTEETKAYCDMETGGGGWTVIQRREDGSVDFQRTWKEYKMGFGSPS GEHWLGNEFVSQVTNQKRYVLKIHRLDWEAGNEAYSLEYEHFYLSSSEEFNYRIHLKGL TGTAGKISSISQPGNDFSTKDADNDKCICKCSQMLTGGWWFDACGPSNLNGMYYP</p>

Tel: 1-631-559-9269 1-516-512-3133

Email: info@creative-biomart.com Fax: 1-631-938-8127

45-1 Ramsey Road, Shirley, NY 11967, USA

QRQNTNKFNGIKWYYWKGSGYSLKATTMMIRPADF

Purity > 90% by SDS-PAGE

Storage Store it under sterile conditions at -20 to -80 centigrade. It is recommended that the protein be aliquoted for optimal storage. Avoid repeated freeze-thaw cycles.

Concentration 0.19 mg/mL by BCA

Storage Buffer Sterile PBS, pH 7.4

GENE INFORMATION

Gene Name [ANGPT2 angiopoietin 2 \[Sus scrofa \(pig\) \]](#)

Official Symbol [ANGPT2](#)

Synonyms [ANGPT2](#); [angiopoietin 2](#); [ANG2](#); [angiopoietin-2](#); [ANG-2](#)

Gene ID [396730](#)

mRNA Refseq [NM_213808](#)

Protein Refseq [NP_998973](#)

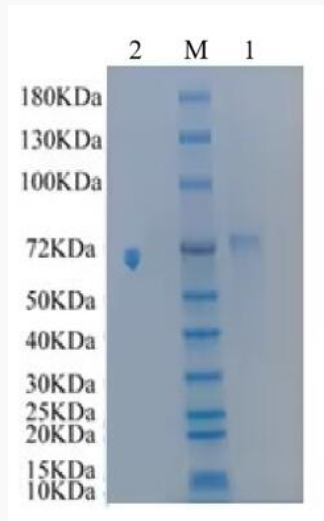
UniProt ID [Q9BDY7](#)

 Tel: 1-631-559-9269 1-516-512-3133

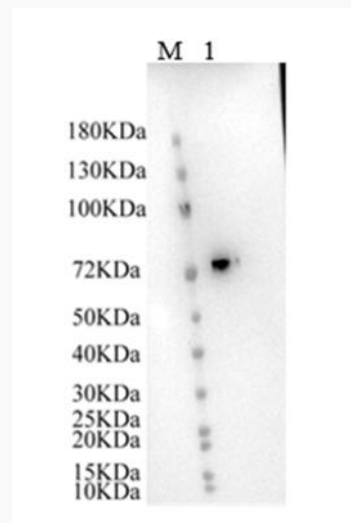
 Email: info@creative-biomart.com  Fax: 1-631-938-8127

 45-1 Ramsey Road, Shirley, NY 11967, USA

SDS-PAGE



WB



 Tel: 1-631-559-9269 1-516-512-3133

 Email: info@creative-biomart.com  Fax: 1-631-938-8127

 45-1 Ramsey Road, Shirley, NY 11967, USA