

Active Recombinant Human ANGPT2 protein, hFc-tagged

Cat. No. ANGPT2-200H Lot. No. (See product label)

SPECIFICATION

Product Overview	Active Recombinant Human ANGPT2 protein(NP_001138.1) (Met 1-Phe 496) was expressed in HEK293, fused with the Fc region of human IgG1 at the C-terminus.
Species	Human
Source	HEK293
ProteinLength	1-496 aa
Form	Lyophilized from sterile 100mM Glycine, 10mM NaCl, 50mM Tris, pH 7.5.
Bio-activity	Measured by its binding ability in a functional ELISA. Immobilized recombinant human Angiopoietin-2 at 10 µg/ml (100 µl/well) can bind Human Tie2 / Fc chimera with a range of 0.2-20 µg/ml.
Molecular Mass	The recombinant human Ang2/Fc is a disulfide-linked homodimeric Protein after removal of the signal pep. The reduced monomer consists of 716 amino acids and predicts a molecular mass of 81.6 kDa. As a result of glycosylation, the rhAng2/Fc monomer migrates as approximately 110-115 kDa band in SDS-PAGE under reducing conditions.
Endotoxin	< 1.0 EU per µg of the protein as determined by the LAL method.
Purity	> 95 % as determined by SDS-PAGE

 Tel: 1-631-559-9269 1-516-512-3133

 Email: info@creative-biomart.com  Fax: 1-631-938-8127

 45-1 Ramsey Road, Shirley, NY 11967, USA

Storage Store it under sterile conditions at -20°C to -80°C upon receiving. Recommend to aliquot the protein into smaller quantities for optimal storage. Avoid repeated freeze-thaw cycles.

Reconstitution It is recommended that sterile water be added to the vial to prepare a stock solution of 0.2 ug/ul. Centrifuge the vial at 4°C before opening to recover the entire contents.

GENE INFORMATION

Gene Name [ANGPT2 angiotensin 2 \[Homo sapiens \]](#)

Official Symbol [ANGPT2](#)

Synonyms [ANGPT2](#); [angiotensin 2](#); [angiotensin-2](#); [Ang2](#); [ANG-2](#); [Tie2-ligand](#); [angiotensin-2B](#); [angiotensin-2a](#); [ANG2](#); [AGPT2](#);

Gene ID [285](#)

mRNA Refseq [NM_001118887](#)

Protein Refseq [NP_001112359](#)

MIM [601922](#)

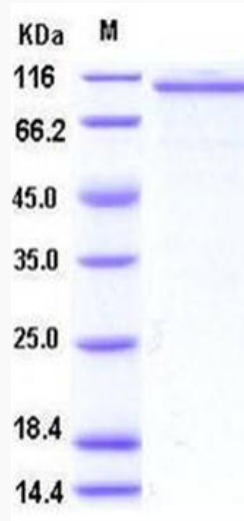
UniProt ID [O15123](#)

 Tel: 1-631-559-9269 1-516-512-3133

 Email: info@creative-biomart.com  Fax: 1-631-938-8127

 45-1 Ramsey Road, Shirley, NY 11967, USA

SDS-PAGE



 Tel: 1-631-559-9269 1-516-512-3133

 Email: info@creative-biomart.com  Fax: 1-631-938-8127

 45-1 Ramsey Road, Shirley, NY 11967, USA