

Recombinant Rabbit ANGPT2 Protein (19-496), C-6xHis-tagged

Cat. No. ANGPT2-27R Lot. No. (See product label)

SPECIFICATION

Product Overview	Recombinant rabbit Angiotensin-2 encompassing amino acids 19-496. This protein contains a C-terminal His-tag (6xHis) was expressed in HEK293. The recombinant protein was affinity purified.
Species	Rabbit
Source	HEK293
ProteinLength	19-496
Description	<p>This gene belongs to the angiotensin family of growth factors. The protein encoded by this gene is an antagonist of angiotensin 1, and both angiotensin 1 and angiotensin 2 are ligands for the endothelial TEK receptor tyrosine kinase.</p> <p>Angiotensin 2 is upregulated in multiple inflammatory diseases and is implicated in the direct control of inflammation-related signaling pathways. The encoded protein affects angiogenesis during embryogenesis and tumorigenesis, disrupts the vascular remodeling ability of angiotensin 1, and may induce endothelial cell apoptosis. This gene serves a prognostic biomarker for acute respiratory distress syndrome.</p>
Form	Aqueous buffer solution
Molecular Mass	58 kDa + glycans
Purity	≥70%

 Tel: 1-631-559-9269 1-516-512-3133

 Email: info@creative-biomart.com  Fax: 1-631-938-8127

 45-1 Ramsey Road, Shirley, NY 11967, USA

Usage	Thaw on ice and gently mix prior to use. DO NOT VORTEX. Perform a quick spin before opening. Aliquot into small volumes and flash freeze for long term storage. Avoid multiple freeze/thaw cycles.
Storage	At least 6 months at -80 centigrade
Storage Buffer	8 mM phosphate, pH 7.4, 110 mM NaCl, 2.2 mM KCl, and 20% glycerol.
Shipping	At -80 centigrade
Warning	Avoid freeze/thaw cycles.

GENE INFORMATION

Gene Name	LOC100353377 <i>angiopoietin 2</i> [<i>Oryctolagus cuniculus</i> (rabbit)]
Official Symbol	LOC100353377
Synonyms	LOC100353377; angiopoietin 2; ANGPT2; angiopoietin-2
Gene ID	100353377
mRNA Refseq	XM_002720896
Protein Refseq	XP_002720942
UniProt ID	G1T9B3

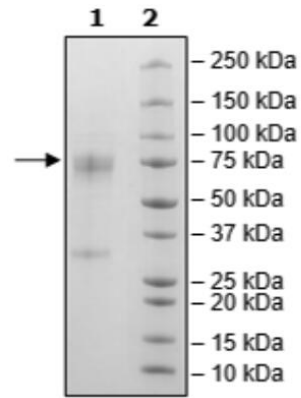
 Tel: 1-631-559-9269 1-516-512-3133

 Email: info@creative-biomart.com  Fax: 1-631-938-8127

 45-1 Ramsey Road, Shirley, NY 11967, USA

**SDS-PAGE analysis
of Prolactin-
Inducible Protein
native protein, 12%
gel stained with
Coomassie Brilliant
Blue G250.**

4-20% SDS-Page Coomassie Staining



 Tel: 1-631-559-9269 1-516-512-3133

 Email: info@creative-biomart.com  Fax: 1-631-938-8127

 45-1 Ramsey Road, Shirley, NY 11967, USA