

Recombinant Dog ANGPT2 protein(19-495aa), His-tagged

Cat. No. ANGPT2-2938D Lot. No. (See product label)

SPECIFICATION

Product Overview	Recombinant Dog ANGPT2 protein(A0A8J8)(19-495aa), fused with C-terminal His tag, was expressed in HEK293.
Species	Dog
Source	HEK293
ProteinLength	19-495aa
Form	Lyophilized from a 0.2 µm filtered 20 mM Tris-HCl, 0.5 M NaCl, 6% Trehalose, pH 8.0
Bio-activity	Measured by its binding ability in a functional ELISA. Immobilized Dog ANGPT2 at 2 µg/mL can bind anti-ANGPT2 recombinant antibody, the EC50 is 2.836-4.992 ng/mL.
Molecular Mass	57.2 kDa
Endotoxin	Less than 1.0 EU/ug as determined by LAL method.
Purity	Greater than 95% as determined by SDS-PAGE.
Storage	Store at -20°C/-80°C upon receipt, aliquoting is necessary for mutiple use. Avoid repeated freeze-thaw cycles.
Reconstitution	We recommend that this vial be briefly centrifuged prior to opening to bring the contents to the bottom. Please reconstitute protein in deionized sterile water to a

 Tel: 1-631-559-9269 1-516-512-3133

 Email: info@creative-biomart.com  Fax: 1-631-938-8127

 45-1 Ramsey Road, Shirley, NY 11967, USA

concentration of 0.1-1.0 mg/mL. We recommend to add 5-50% of glycerol (final concentration) and aliquot for long-term storage at -20°C/-80°C.

AA Sequence

YNNFRSMDSIGRRQYQVQHSGCSYTFLLPETDNCRSPGSYVPAVQRDAPLDYD
 DSVQRLQVLENIMENNTQWLIKLENYIQDNMKKEMVEMQQNAVQNQTAVMIEIGTN
 LLNQTAEQTRKLT DVEAQVLNQTRLELQLEHSLSTNKLEKQILDQTSEINKLQDKN
 SFLEKKVLDMEDKHIVQLRSIKEEKDQLQVLVSKQNSIIEELEKQLVTATVNNSVLQK
 QQHDLMETVHSLTMTISPSKSPKDTFVAKEEQIYRDCAEVFKSGLTTNGIYTLTFPN
 STEEIKAYCDMETSGGGWTVIQRREDGSVDFQRTWKEYKVGFGNPSGEHWLGNE
 FVFQVTNQPPYVLKIHLDWEGNEAYSLEYEHFYLSGEELNYRIHLKGLTGTAGKISSI
 SQPGNDFSTKDADNDKCICKCSQMLTGGWWFDACGPSNLNGMYYPQRQNTNKFN
 GIKWYYWKGSYSLKGTMMIRPADF

GENE INFORMATION

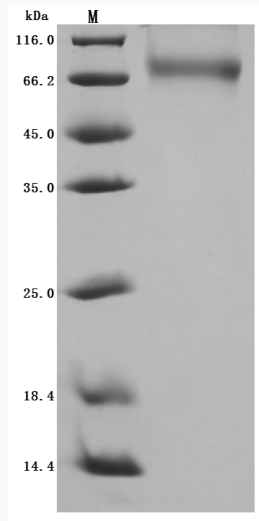
Gene Name	ANGPT2 angiotensin 2 [<i>Canis lupus familiaris</i>]
Official Symbol	ANGPT2
Synonyms	ANGPT2; angiotensin 2; angiotensin-2; ANG-2;
Gene ID	607616
mRNA Refseq	NM_001048126
Protein Refseq	NP_001041591

 Tel: 1-631-559-9269 1-516-512-3133

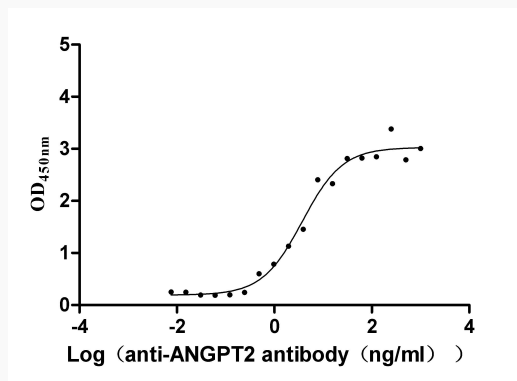
 Email: info@creative-biomart.com  Fax: 1-631-938-8127

 45-1 Ramsey Road, Shirley, NY 11967, USA

SDS-PAGE



Activity



 Tel: 1-631-559-9269 1-516-512-3133

 Email: info@creative-biomart.com  Fax: 1-631-938-8127

 45-1 Ramsey Road, Shirley, NY 11967, USA