

Recombinant Human ANGPT2 protein, His-Avi-tagged, Biotinylated

Cat. No. ANGPT2-523HB Lot. No. (See product label)

SPECIFICATION

Product Overview	Biotinylated Recombinant Human ANGPT2 protein(O15123-1)(Lys275-Phe496), fused with N-terminal His and Avi tag, was expressed in HEK293.
Species	Human
Source	HEK293
ProteinLength	Lys275-Phe496
Tag	N-His-Avi
Conjugation/Label	Biotin
Form	Lyophilized from 0.22µm filtered solution in PBS (pH 7.4). Normally 5% trehalose is added as protectant before lyophilization.
Bio-activity	Immobilized Biotinylated Human ANGPT2, His Tag at 1ug/ml (100ul/well) on the streptavidin precoated plate (5ug/ml). Dose response curve for Anti-ANGPT2 Antibody, hFc Tag with the EC50 of 3.8ng/ml determined by ELISA.
Molecular Mass	The protein has a predicted MW of 28.4 kDa. Due to glycosylation, the protein migrates to 32-37 kDa based on Tris-Bis PAGE result.
Endotoxin	Less than 1EU per µg by the LAL method.

 Tel: 1-631-559-9269 1-516-512-3133

 Email: info@creative-biomart.com  Fax: 1-631-938-8127

 45-1 Ramsey Road, Shirley, NY 11967, USA



Purity	> 95% as determined by Tris-Bis PAGE
Storage	Reconstituted protein stable at -80°C for 12 months, 4°C for 1 week. Use a manual defrost freezer and avoid repeated freeze-thaw cycles.
Reconstitution	Centrifuge tubes before opening. Reconstituting to a concentration more than 100 µg/ml is recommended. Dissolve the lyophilized protein in distilled water.
Conjugation	Biotin

GENE INFORMATION

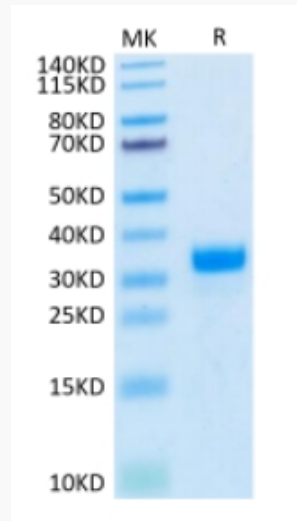
Gene Name	ANGPT2 angiotensin 2 [Homo sapiens]
Official Symbol	ANGPT2
Synonyms	ANGPT2; angiotensin 2; angiotensin-2; Ang2; ANG-2; Tie2-ligand; angiotensin-2B; angiotensin-2a; ANG2; AGPT2;
Gene ID	285
mRNA Refseq	NM_001118887
Protein Refseq	NP_001112359
MIM	601922
UniProt ID	O15123

Tel: 1-631-559-9269 1-516-512-3133

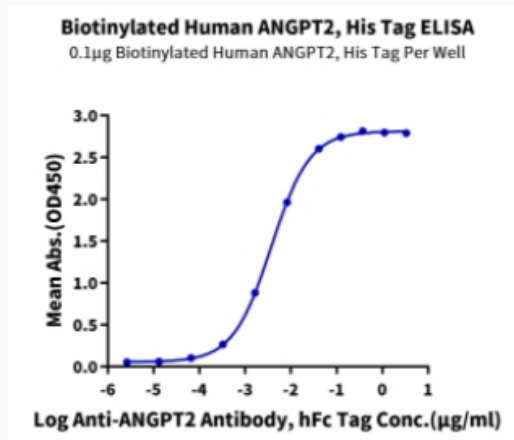
Email: info@creative-biomart.com Fax: 1-631-938-8127

45-1 Ramsey Road, Shirley, NY 11967, USA

Tris-Bis PAGE



ELISA Data



 Tel: 1-631-559-9269 1-516-512-3133

 Email: info@creative-biomart.com  Fax: 1-631-938-8127

 45-1 Ramsey Road, Shirley, NY 11967, USA