

## Recombinant Human ANGPT2 protein, His-Avi-tagged

Cat. No. ANGPT2-6523H Lot. No. (See product label)

### SPECIFICATION

<b>Product Overview</b>	Recombinant Human ANGPT2 protein(O15123-1)(Lys275-Phe496), fused with N-terminal His and Avi tag, was expressed in HEK293.
<b>Species</b>	Human
<b>Source</b>	HEK293
<b>ProteinLength</b>	Lys275-Phe496
<b>Tag</b>	N-His-Avi
<b>Form</b>	Lyophilized from 0.22µm filtered solution in PBS (pH 7.4). Normally 5% trehalose is added as protectant before lyophilization.
<b>Bio-activity</b>	Immobilized Human ANGPT2, His Tag at 2µg/ml (100µl/well). Dose response curve for Anti-ANGPT2 Antibody, hFc Tag with the EC50 of 17.8ng/ml determined by ELISA.
<b>Molecular Mass</b>	The protein has a predicted MW of 28.4 kDa. Due to glycosylation, the protein migrates to 30-35 kDa based on Tris-Bis PAGE result.
<b>Endotoxin</b>	Less than 1EU per µg by the LAL method.
<b>Purity</b>	> 95% as determined by Tris-Bis PAGE

 Tel: 1-631-559-9269 1-516-512-3133

 Email: [info@creative-biomart.com](mailto:info@creative-biomart.com)  Fax: 1-631-938-8127

 45-1 Ramsey Road, Shirley, NY 11967, USA

**Storage** Reconstituted protein stable at -80°C for 12 months, 4°C for 1 week. Use a manual defrost freezer and avoid repeated freeze-thaw cycles.

**Reconstitution** Centrifuge tubes before opening. Reconstituting to a concentration more than 100 µg/ml is recommended. Dissolve the lyophilized protein in distilled water.

## GENE INFORMATION

**Gene Name** [ANGPT2 angiopoietin 2 \[ Homo sapiens \]](#)

**Official Symbol** [ANGPT2](#)

**Synonyms** [ANGPT2](#); [angiopoietin 2](#); [angiopoietin-2](#); [Ang2](#); [ANG-2](#); [Tie2-ligand](#); [angiopoietin-2B](#); [angiopoietin-2a](#); [ANG2](#); [AGPT2](#);

**Gene ID** [285](#)

**mRNA Refseq** [NM\\_001118887](#)

**Protein Refseq** [NP\\_001112359](#)

**MIM** [601922](#)

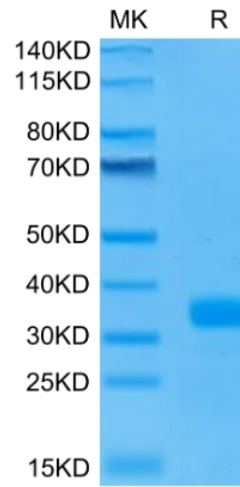
**UniProt ID** [O15123](#)

 Tel: 1-631-559-9269 1-516-512-3133

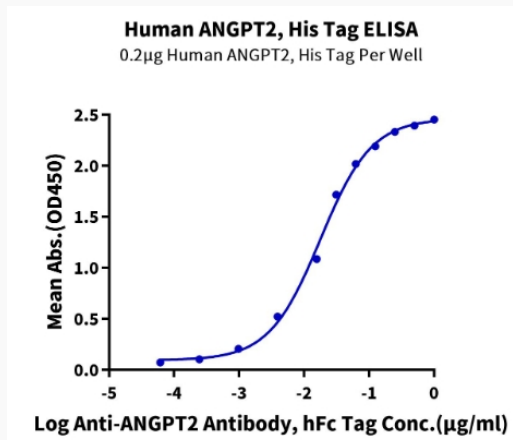
 Email: [info@creative-biomart.com](mailto:info@creative-biomart.com)  Fax: 1-631-938-8127

 45-1 Ramsey Road, Shirley, NY 11967, USA

**Tris-Bis PAGE**



**ELISA Data**



 Tel: 1-631-559-9269 1-516-512-3133

 Email: [info@creative-biomart.com](mailto:info@creative-biomart.com)  Fax: 1-631-938-8127

 45-1 Ramsey Road, Shirley, NY 11967, USA