

Recombinant Dog ANGPT2 protein(19-495aa), His-tagged

Cat. No. ANGPT2-964D Lot. No. (See product label)

SPECIFICATION

Product Overview	Recombinant Dog ANGPT2 protein(A0A8J8)(19-495aa), fused with C-terminal His tag, was expressed in E.coli.
Species	Dog
Source	E.coli
ProteinLength	19-495aa
Form	If the delivery form is liquid, the default storage buffer is Tris/PBS-based buffer, 5%-50% glycerol. If the delivery form is lyophilized powder, the buffer before lyophilization is Tris/PBS-based buffer, 6% Trehalose, pH 8.0.
Molecular Mass	55.9 kDa
Purity	Greater than 85% as determined by SDS-PAGE.
Storage	Store at -20°C/-80°C upon receipt, aliquoting is necessary for mutiple use. Avoid repeated freeze-thaw cycles.
Reconstitution	We recommend that this vial be briefly centrifuged prior to opening to bring the contents to the bottom. Please reconstitute protein in deionized sterile water to a concentration of 0.1-1.0 mg/mL. We recommend to add 5-50% of glycerol (final concentration) and aliquot for long-term storage at -20°C/-80°C.

 Tel: 1-631-559-9269 1-516-512-3133

 Email: info@creative-biomart.com  Fax: 1-631-938-8127

 45-1 Ramsey Road, Shirley, NY 11967, USA

AA Sequence

YNNFRRSMDSIGRRQYQVQHGSYTFLLPETDNCRSPGSYVNAVQRDAPLDYD
DSVQRLQVLENIMENNTQWLIKLENIQDNMKKEMVEMQQNAVQNQTAVMIEIGTN
LLNQTAEQTRKLT DVEAQVLNQTRLELQLEHSLSTNKLEKQILDQTSEINKLQDKN
SFLEKKVLDMEDKHIVQLRSIKEEKDQLQVLVSKQNSIIEELEKQLVTATVNNSVLQK
QQHDLMETVHSLT MISPSKSPKDTFVAKEEQIYRDCAEVFKSGLTTNGIYTLTFPN
STEEIKAYCDMETSGGGWTVIQRREDGSVDFQRTWKEYKVGFGNPSGEHWLGNE
FVFQVTNQQPYVLKIHLKDWEAGNEAYSLEYHFYLSGEELNYRIHLKGLTGTAGKISSI
SQPGNDFSTKDADNDKCICKCSQMLTGGWWFDACGPSNLNGMYYPQRQNTNKFN
GIKWYYWKGSYSLKGTMMIRPADF

GENE INFORMATION

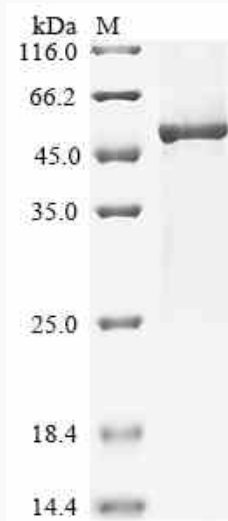
Gene Name	ANGPT2 angiopoietin 2 [<i>Canis lupus familiaris</i>]
Official Symbol	ANGPT2
Synonyms	ANGPT2; angiopoietin 2; angiopoietin-2; ANG-2;
Gene ID	607616
mRNA Refseq	NM_001048126
Protein Refseq	NP_001041591

 Tel: 1-631-559-9269 1-516-512-3133

 Email: info@creative-biomart.com  Fax: 1-631-938-8127

 45-1 Ramsey Road, Shirley, NY 11967, USA

SDS-PAGE



 Tel: 1-631-559-9269 1-516-512-3133

 Email: info@creative-biomart.com  Fax: 1-631-938-8127

 45-1 Ramsey Road, Shirley, NY 11967, USA