

## Recombinant Human ANGPTL2 protein, His-Avi-tagged

Cat. No. ANGPTL2-5713H Lot. No. (See product label)

### SPECIFICATION

<b>Product Overview</b>	Recombinant Human ANGPTL2 protein(Q9UKU9-1)(Thr260-His493), fused with C-terminal His and Avi tag, was expressed in HEK293.
<b>Species</b>	Human
<b>Source</b>	HEK293
<b>ProteinLength</b>	Thr260-His493
<b>Tag</b>	C-His-Avi
<b>Form</b>	Lyophilized from 0.22µm filtered solution in PBS (pH 7.4). Normally 8% trehalose is added as protectant before lyophilization.
<b>Bio-activity</b>	Human LILRB2, hFc Tag captured on CM5 Chip via Protein A can bind Human ANGPTL2, His Tag with an affinity constant of 0.22 µM as determined in SPR assay (Biacore T200).
<b>Molecular Mass</b>	The protein has a predicted MW of 30.1 kDa. Due to glycosylation, the protein migrates to 31-35 kDa based on Tris-Bis PAGE result.
<b>Endotoxin</b>	Less than 1EU per µg by the LAL method.
<b>Purity</b>	> 95% as determined by Tris-Bis PAGE; > 95% as determined by HPLC

 Tel: 1-631-559-9269 1-516-512-3133

 Email: [info@creative-biomart.com](mailto:info@creative-biomart.com)  Fax: 1-631-938-8127

 45-1 Ramsey Road, Shirley, NY 11967, USA

**Storage** Reconstituted protein stable at -80°C for 12 months, 4°C for 1 week. Use a manual defrost freezer and avoid repeated freeze-thaw cycles.

**Reconstitution** Centrifuge tubes before opening. Reconstituting to a concentration more than 100 µg/ml is recommended. Dissolve the lyophilized protein in distilled water.

## GENE INFORMATION

**Gene Name** [ANGPTL2 angiotensin-like 2 \[ Homo sapiens \]](#)

**Official Symbol** [ANGPTL2](#)

**Synonyms** ANGPTL2; angiotensin-like 2; angiotensin-related protein 2; ARP2; HARP; angiotensin-like protein 2; MGC8889;

**Gene ID** [23452](#)

**mRNA Refseq** [NM\\_012098](#)

**Protein Refseq** [NP\\_036230](#)

**MIM** [605001](#)

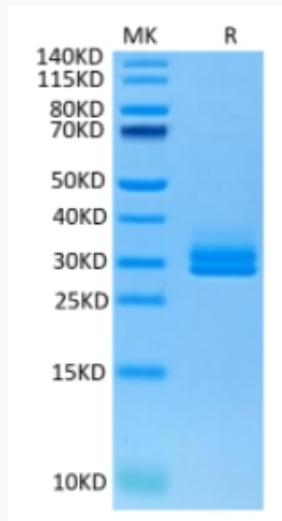
**UniProt ID** [Q9UKU9](#)

 Tel: 1-631-559-9269 1-516-512-3133

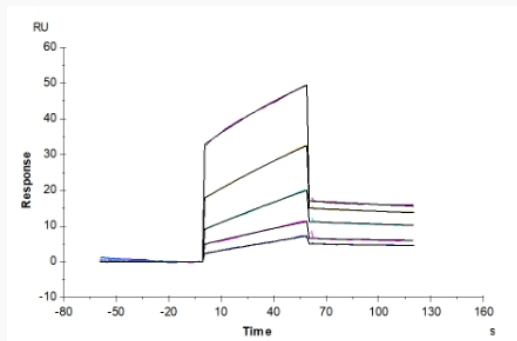
 Email: [info@creative-biomart.com](mailto:info@creative-biomart.com)  Fax: 1-631-938-8127

 45-1 Ramsey Road, Shirley, NY 11967, USA

**Tris-Bis PAGE**



**SPR Data**



 Tel: 1-631-559-9269 1-516-512-3133

 Email: [info@creative-biomart.com](mailto:info@creative-biomart.com)  Fax: 1-631-938-8127

 45-1 Ramsey Road, Shirley, NY 11967, USA