

## Recombinant Human ANGPTL3 protein, His-Avi-tagged, Biotinylated

**Cat. No.** ANGPTL3-951HB    **Lot. No.** (See product label)

### SPECIFICATION

<b>Product Overview</b>	Biotinylated Recombinant Human ANGPTL3 protein(Q9Y5C1)(Ser17-Lys219), fused with C-terminal His and Avi tag, was expressed in HEK293.
<b>Species</b>	Human
<b>Source</b>	HEK293
<b>ProteinLength</b>	Ser17-Lys219
<b>Tag</b>	C-His-Avi
<b>Conjugation/Label</b>	Biotin
<b>Form</b>	Lyophilized from 0.22µm filtered solution in PBS (pH 7.4). Normally 5% trehalose is added as protectant before lyophilization.
<b>Bio-activity</b>	Immobilized Anti-ANGPTL3 Antibody, hFc Tag at 1ug/ml (100ul/well) on the plate. Dose response curve for Biotinylated Human ANGPTL3, His Tag with the EC50 of 10.2ng/ml determined by ELISA.
<b>Molecular Mass</b>	The protein has a predicted MW of 26.6 kDa. Due to glycosylation, the protein migrates to 30-38 kDa based on Tris-Bis PAGE result.
<b>Endotoxin</b>	Less than 1EU per µg by the LAL method.

 Tel: 1-631-559-9269    1-516-512-3133

 Email: [info@creative-biomart.com](mailto:info@creative-biomart.com)     Fax: 1-631-938-8127

 45-1 Ramsey Road, Shirley, NY 11967, USA

<b>Purity</b>	> 95% as determined by Tris-Bis PAGE
<b>Storage</b>	Reconstituted protein stable at -80°C for 12 months, 4°C for 1 week. Use a manual defrost freezer and avoid repeated freeze-thaw cycles.
<b>Reconstitution</b>	Centrifuge tubes before opening. Reconstituting to a concentration more than 100 µg/ml is recommended. Dissolve the lyophilized protein in distilled water.
<b>Conjugation</b>	Biotin

## GENE INFORMATION

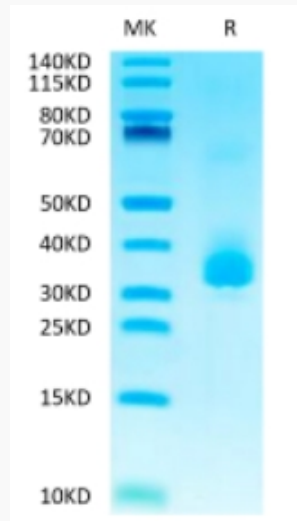
<b>Gene Name</b>	<a href="#">ANGPTL3 angiopoietin-like 3 [ Homo sapiens ]</a>
<b>Official Symbol</b>	<a href="#">ANGPTL3</a>
<b>Synonyms</b>	ANGPTL3; angiopoietin-like 3; ANGPT5; angiopoietin-related protein 3; angiopoietin 5; ANG-5; FHBL2;
<b>Gene ID</b>	<a href="#">27329</a>
<b>mRNA Refseq</b>	<a href="#">NM_014495</a>
<b>Protein Refseq</b>	<a href="#">NP_055310</a>
<b>MIM</b>	<a href="#">604774</a>
<b>UniProt ID</b>	<a href="#">Q9Y5C1</a>

 Tel: 1-631-559-9269 1-516-512-3133

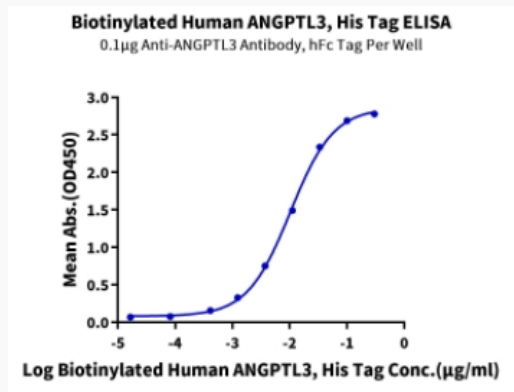
 Email: [info@creative-biomart.com](mailto:info@creative-biomart.com)  Fax: 1-631-938-8127

 45-1 Ramsey Road, Shirley, NY 11967, USA

**Tris-Bis PAGE**



**ELISA Data**



 Tel: 1-631-559-9269 1-516-512-3133

 Email: [info@creative-biomart.com](mailto:info@creative-biomart.com)  Fax: 1-631-938-8127

 45-1 Ramsey Road, Shirley, NY 11967, USA