

Recombinant Human ANGPTL6 protein, hFc-tagged

Cat. No. ANGPTL6-4537H **Lot. No.** (See product label)

SPECIFICATION

Product Overview Recombinant Human ANGPTL6 protein(Q8NI99)(21-470 aa), fused with C-terminal hFc tag, was expressed in Mammalian Cells.

Species Human

Source Mammalian Cells

ProteinLength 21-470 aa

Form For liquid formulations, the standard storage buffer consists of a Tris or PBS based solution supplemented with 5-50% glycerol. When provided as lyophilized powder, the product undergoes freeze-drying from a Tris- or PBS-based formulation containing 6% trehalose, adjusted to pH 8.0 prior to the lyophilization process.

Molecular Mass 80.6 kDa

AASequence

RAGAPRCTYTFVLPPQKFTGAVCWSGPASTRATPEAANASELAALRMRVGRHEELL
RELQRLAAADGAVAGEVRALRKESRGLSARLGQLRAQLQHEAGPGAGPGADLGAE
PAAALALLGERVLNASAEAQRAAARFHQLDVKFRELAQLVTQQSSLIARLERLCPGG
AGGQQQVLPPPPLVPVVPVRLVGSTSDTSRMLDPAPEPQRDQTRRQQEPMASPM
PAGHPAVPTKPVGPWQDCAEARQAGHEQSGVYELRVGRHVSVWCEQQLEGGG
WTVIQRRQDGSVNFFTTWQHYPKAGFGRPDGEYWLGLEPVYQLTSRGDHELLVLE
DWGGRGARAHYDGFSLPEPSDHYRLRLGQYHGDAGDSLWHNDKPFSTVDRDRD
SYSGNCALYQRGGWYHACAHSNLNGVWHHGGHYRSRYQDGVYWAEFRGGAY
SLRKAAMLIRPLKL

 Tel: 1-631-559-9269 1-516-512-3133

 Email: info@creative-biomart.com  Fax: 1-631-938-8127

 45-1 Ramsey Road, Shirley, NY 11967, USA

Purity	Greater than 90% as determined by SDS-PAGE.
Storage	Store at -20°C/-80°C upon receipt, aliquoting is necessary for mutiple use. Avoid repeated freeze-thaw cycles.
Reconstitution	Please reconstitute protein indeionized sterile water to a concentration of 0.1-1.0 mg/mL. Aliquot for long-term storage at -80°C.

GENE INFORMATION

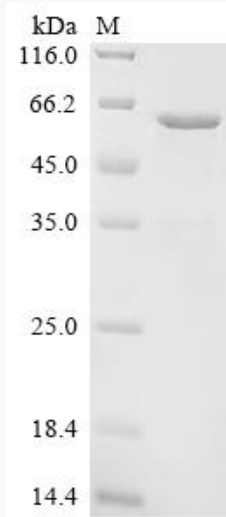
Gene Name	ANGPTL6 angiotensin-like 6 [Homo sapiens]
Official Symbol	ANGPTL6
Synonyms	ANGPTL6; angiotensin-like 6; angiotensin-related protein 6; AGF; angiotensin related protein 5; ARP5; angiotensin-like protein 6; angiotensin-related protein 5; angiotensin-related growth factor;
Gene ID	83854
mRNA Refseq	NM_031917
Protein Refseq	NP_114123
MIM	609336
UniProt ID	Q8NI99

 Tel: 1-631-559-9269 1-516-512-3133

 Email: info@creative-biomart.com  Fax: 1-631-938-8127

 45-1 Ramsey Road, Shirley, NY 11967, USA

SDS-PAGE



 Tel: 1-631-559-9269 1-516-512-3133

 Email: info@creative-biomart.com  Fax: 1-631-938-8127

 45-1 Ramsey Road, Shirley, NY 11967, USA