

Recombinant Human ANGPTL7 Protein, Met1-Pro346, C-His tagged

Cat. No. ANGPTL7-010H Lot. No. (See product label)

SPECIFICATION

Product Overview	Recombinant Human ANGPTL7 Protein (Met1-Pro346) with C-His tag was expressed in HEK293.
Species	Human
Source	HEK293
ProteinLength	Met1-Pro346
Description	Angiopoietin-related protein 7 (ANGPTL7) is a 40kDa protein initially discovered in the cornea stromal layer. Increased levels have been observed in glaucoma and ANGPTL7 has been associated with various cancers including hepatic cancer metastasis. Studies have shown plasma levels are increased in obesity making it a potential therapeutic target.
Form	Lyophilized
Molecular Mass	Predicted Molecular Mass: 40 kDa SDS-PAGE: 50 kDa
Purity	> 95% as analyzed by SDS-PAGE
N-terminal Sequence Analysis	Gln27 (predicted)

 Tel: 1-631-559-9269 1-516-512-3133

 Email: info@creative-biomart.com  Fax: 1-631-938-8127

 45-1 Ramsey Road, Shirley, NY 11967, USA

Applications	ELISA and Western Blot Analysis
Notes	For Research Use Only.
Storage	2 years at -20 to -80 centigrade as supplied. 1 month at 4 centigrade after reconstitution with preservative. 1 year at -20 to -80 centigrade after reconstitution.
Storage Buffer	Lyophilized from 1xPBS with Trelahose
Shipping	Ambient
Reconstitution	Reconstitute at 25 µg/mL in sterile PBS containing at least 0.1% protein

GENE INFORMATION

Gene Name	ANGPTL7 angiopoietin-like 7 [Homo sapiens (human)]
Official Symbol	ANGPTL7
Synonyms	ANGPTL7; angiopoietin-like 7; angiopoietin-related protein 7; AngX; CDT6; angiopoietin-like protein 7; angiopoietin-like factor (CDT6); cornea-derived transcript 6 protein; dJ647M16.1; RP4-647M16.2
Gene ID	10218
mRNA Refseq	NM_021146
Protein Refseq	NP_066969
MIM	618517

 Tel: 1-631-559-9269 1-516-512-3133

 Email: info@creative-biomart.com  Fax: 1-631-938-8127

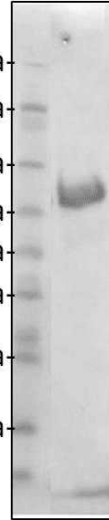
 45-1 Ramsey Road, Shirley, NY 11967, USA

UniProt ID

O43827

**ANGPTL7 (2.5 µg) on
a Coomassie stained
4-12% SDS-PAGE
gel, reducing
conditions**

188kDa
98kDa
62kDa
49kDa
38kDa
28kDa
14kDa
6kDa



 Tel: 1-631-559-9269 1-516-512-3133

 Email: info@creative-biomart.com  Fax: 1-631-938-8127

 45-1 Ramsey Road, Shirley, NY 11967, USA