

Recombinant Human ANGPTL7 protein, hlgG-tagged

Cat. No. ANGPTL7-01H Lot. No. (See product label)

SPECIFICATION

Product Overview	Recombinant Human ANGPTL7 protein, fused to hlgG-Tag, was expressed in HEK293T.
Species	Human
Source	HEK293
ProteinLength	27-346aa
Description	Enables identical protein binding activity. Involved in negative regulation of vasculature development involved in avascular cornea development in camera-type eye and regulation of extracellular matrix organization. Located in extracellular region.
Form	Liquid. In Phosphate-Buffered Saline (pH 7.4) containing 10% glycerol.
Molecular Mass	63.2 kDa
AA Sequence	<p>QKLSKHKTPA QPQLKAANCC EEVKELKAQV ANLSSLLSEL NKKQERDWVS VVMQVMELES NSKRME SRLT DAESKYSEM N NQIDIMQLQA AQTVTQTSAD AIYDCSSLYQ KNYRISGVYK LPPDDFLGSP ELEVFCDMET SGGGWTTIQR RKSGLVSFYR DWKQYKQGF G SIRGDFWLGN EHIHRLSRQP TRLRVEMEDW EGNLRYAEYS HFVLGNELNS YRLFLGNYTG NVGNDALQYH NNTAFSTKDK DNDNCLDKCA QLRKGGYWYN CCTDSNLNGV YYRLGEHNKH LDGITWYGWH GSTYSLKRVE MKIRPEDFKP</p>

 Tel: 1-631-559-9269 1-516-512-3133

 Email: info@creative-biomart.com  Fax: 1-631-938-8127

 45-1 Ramsey Road, Shirley, NY 11967, USA

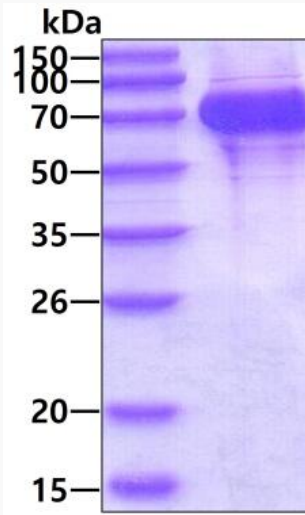
Endotoxin	< 1 EU per 1ug of protein (determined by LAL method).
Purity	> 90%
Applications	SDS-PAGE
Storage	Can be stored at 2 centigrade to 8 centigrade for 1 week. For long term storage, aliquot and store at -20 centigrade to -80 centigrade. Avoid repeated freezing and thawing cycles.
Concentration	0.25mg/ml
GENE INFORMATION	
Gene Name	ANGPTL7 angiopoietin like 7 [Homo sapiens (human)]
Official Symbol	ANGPTL7
Synonyms	angiopoietin like 7; AngX; CDT6; dJ647M16.1; Angiopoietin-like factor; Angiopoietin-like Protein 7; angiopoietin-related protein 7; ANGPTL7; Cornea-derived transcript 6 protein
Gene ID	10218
mRNA Refseq	NM_021146.4
Protein Refseq	NP_066969.1
MIM	618517
UniProt ID	O43827

 Tel: 1-631-559-9269 1-516-512-3133


 Email: info@creative-biomart.com  Fax: 1-631-938-8127

 45-1 Ramsey Road, Shirley, NY 11967, USA

SDS-PAGE



3ug by SDS-PAGE under reducing condition and visualized by coomassie blue stain.

 Tel: 1-631-559-9269 1-516-512-3133

 Email: info@creative-biomart.com  Fax: 1-631-938-8127

 45-1 Ramsey Road, Shirley, NY 11967, USA