

## Recombinant Human ANGPTL7 protein, His-tagged

Cat. No. ANGPTL7-327H Lot. No. (See product label)

### SPECIFICATION

<b>Product Overview</b>	Recombinant Human ANGPTL7 protein (Gln27-Pro346), fused to His tag at C-terminus, was expressed in human 293 cells (HEK293).
<b>Species</b>	Human
<b>Source</b>	HEK293
<b>ProteinLength</b>	320
<b>Description</b>	Angiopoietin-like 7 (ANGPTL7) is also known as Corneal-Derived Transcript 6 (CDT6), and is a secreted glycoprotein that is structurally related to the angiopoietins. It is expressed in the corneal stroma, trabecular meshwork, and sclera and is elevated in glaucoma aqueous humor. Recently, ANGPTL proteins, including ANGPTL-2, -3, -4, -5 and -7, are identified as growth factors in combination with SCF, Thrombopoietin, IGF-II and FGF acidic that enhance the expansion and engraftment of human and mouse hematopoietic stem cells.
<b>Form</b>	Lyophilized from 0.22 um filtered solution in PBS, pH7.4, 10% trehalose.
<b>Molecular Mass</b>	The protein has a calculated MW of 39.0 kDa. The protein migrates as 38-40 kDa and 50-55 kDa under reducing (R) condition (SDS-PAGE) due to glycosylation.
<b>Endotoxin</b>	Less than 1.0 EU per ug by the LAL method.
<b>Purity</b>	>85% as determined by SDS-PAGE.

 Tel: 1-631-559-9269 1-516-512-3133

 Email: [info@creative-biomart.com](mailto:info@creative-biomart.com)  Fax: 1-631-938-8127

 45-1 Ramsey Road, Shirley, NY 11967, USA

**Storage**

For long term storage, the product should be stored at lyophilized state at -20 centigrade or lower.

Please avoid repeated freeze-thaw cycles.

This product is stable after storage at:

- 20 centigrade to -70 centigrade for 12 months in lyophilized state;
- 70 centigrade for 3 months under sterile conditions after reconstitution.

**Reconstitution**

It is recommended that sterile water be added to the vial to prepare a stock solution of 0.2 ug/ul. Centrifuge the vial at 4°C before opening to recover the entire contents.

## GENE INFORMATION

**Gene Name** [ANGPTL7](#)

**Official Symbol** [ANGPTL7](#)

**Synonyms** [ANGPTL7](#); angiotensin-like 7; angiotensin-related protein 7; AngX; CDT6; angiotensin-like protein 7; angiotensin-like factor (CDT6); cornea-derived transcript 6 protein; dJ647M16.1; RP4-647M16.2

**Gene ID** [10218](#)

**mRNA Refseq** [NM\\_021146](#)

**Protein Refseq** [NP\\_066969](#)

**MIM** [618517](#)

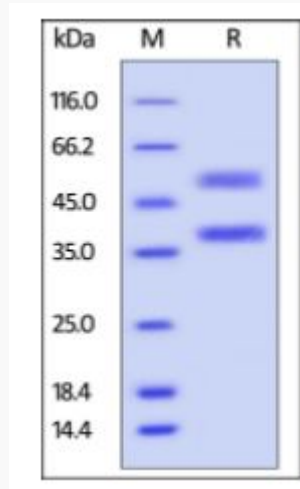
**UniProt ID** [O43827](#)

 Tel: 1-631-559-9269 1-516-512-3133

 Email: [info@creative-biomart.com](mailto:info@creative-biomart.com)  Fax: 1-631-938-8127

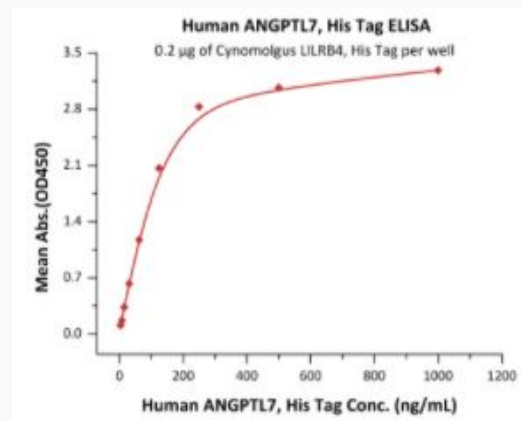
 45-1 Ramsey Road, Shirley, NY 11967, USA

**SDS-PAGE of  
ANGPTL7-327H**



Human ANGPTL7, His Tag on SDS-PAGE under reducing (R) condition. The gel was stained overnight with Coomassie Blue. The purity of the protein is greater than 85%.

**Bioactivity-ELISA of  
ANGPTL7-327H**



Immobilized Cynomolgus LILRB4, His Tag at 2 µg/mL (100 µL/well) can bind Human ANGPTL7, His Tag with a linear range of 8-125 ng/mL (QC tested).

Tel: 1-631-559-9269 1-516-512-3133

Email: [info@creative-biomart.com](mailto:info@creative-biomart.com) Fax: 1-631-938-8127

45-1 Ramsey Road, Shirley, NY 11967, USA