

Recombinant Human ANGPTL8 protein, His-tagged

Cat. No. ANGPTL8-1643H Lot. No. (See product label)

SPECIFICATION

Product Overview	Recombinant Human ANGPTL8 aa. (Met24~Leu196) fused with N-terminal His tag was produced in E. coli cells.
Species	Human
Source	E.coli
ProteinLength	Met24~Leu196
Form	Freeze-dried powder
Molecular Mass	25kDa as determined by SDS-PAGE reducing conditions.
Endotoxin	<1.0EU per 1ug (determined by the LAL method)
Purity	>92%
Applications	SDS-PAGE; WB; ELISA; IP; ColP; Reporter Assays; Purification; Amine Reactive Labeling.
Stability	The thermal stability is described by the loss rate. The loss rate was determined by accelerated thermal degradation test, that is, incubate the protein at 37°C for 48h, and no obvious degradation and precipitation were observed. The loss rate is less than 5% within the expiration date under appropriate storage condition.

 Tel: 1-631-559-9269 1-516-512-3133

 Email: info@creative-biomart.com  Fax: 1-631-938-8127

 45-1 Ramsey Road, Shirley, NY 11967, USA

Storage	Avoid repeated freeze/thaw cycles. Store at 2-8°C for one month. Aliquot and store at -80°C for 12 months.
Concentration	200µg/mL
Storage buffer	20mM Tris, 150mM NaCl, pH8.0, containing 1mM EDTA, 1mM DTT, 0.01% sarcosyl, 5%Trehalose and Proclin300.
Reconstitution	Reconstitute in 20mM Tris, 150mM NaCl (pH8.0) to a concentration of 0.1-1.0 mg/mL. Do not vortex.
Isoelectric Point	7.3

GENE INFORMATION

Gene Name	ANGPTL8 angiotensin like 8 [Homo sapiens (human)]
Official Symbol	ANGPTL8
Synonyms	ANGPTL8; angiotensin like 8; RIFL; TD26; PRO1185; PVPA599; C19orf80; angiotensin-like protein 8; betatrophin variant 1; betatrophin variant 2; hepatocellular carcinoma-associated gene TD26; hepatocellular carcinoma-associated protein TD26; lipasin; refeeding-induced fat and liver protein
Gene ID	55908
mRNA Refseq	NM_018687.6
Protein Refseq	NP_061157.3
UniProt ID	Q6UXH0

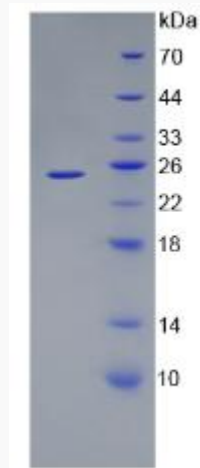
 Tel: 1-631-559-9269 1-516-512-3133

 Email: info@creative-biomart.com  Fax: 1-631-938-8127

 45-1 Ramsey Road, Shirley, NY 11967, USA



SDS-PAGE



Tel: 1-631-559-9269 1-516-512-3133

Email: info@creative-biomart.com Fax: 1-631-938-8127

45-1 Ramsey Road, Shirley, NY 11967, USA