

## Recombinant Human ANKH protein, GST-tagged

Cat. No. ANKH-564H Lot. No. (See product label)

### SPECIFICATION

<b>Product Overview</b>	Human ANKH full-length ORF ( AAH14526.1, 1 a.a. - 492 a.a.) recombinant protein with GST-tag at N-terminal.
<b>Species</b>	Human
<b>Source</b>	Wheat Germ
<b>Description</b>	This gene encodes a multipass transmembrane protein that is expressed in joints and other tissues and controls pyrophosphate levels in cultured cells. Progressive ankylosis-mediated control of pyrophosphate levels has been suggested as a possible mechanism regulating tissue calcification and susceptibility to arthritis in higher animals. Mutations in this gene have been associated with autosomal dominant craniometaphyseal dysplasia. [provided by RefSeq, Jul 2008]
<b>Molecular Mass</b>	79.86 kDa
<b>AA Sequence</b>	MVKFPALTHYWPLIRFLVPLGITNIAIDFGEQALNRGIAAVKEDAVEMLASYGLAYSLM KFFTGPMSDFKNVGLVFNKRDRTKAVLCMVVAGAIAAVFHTLIAYSDLGYYIINKL HHVDESVGSKTRRAFLYLAAFPMDAMAWTHAGILLKHKYSFLVGCASISDVIAQVV FVAILLHSHLECREPLLIPILSLYMGALVRCTTLCLGYYKNIHDIIPDRSGPELGGDATIR KMLSFWWPLALILATQRISRPIVNLFVSRDLGGSSAATEAVAILTATYPVGHMPYGWL TEIRAVYPAFDKNNPSNKLVSTSNTVTAHIKKFTFVCMALSLTLCFVMFWTPNVSEK ILIDIIGVDFAFaelcVvPLRIFSFFPVPVTRAHLTGWLMTLKKTFVLAPSSVLRRIIVLIA SLVVLPYLGVHGATLGVGSLLAGFVGESTMVAIAACYVYRKQKKKMENESATEGED

 Tel: 1-631-559-9269 1-516-512-3133

 Email: [info@creative-biomart.com](mailto:info@creative-biomart.com)  Fax: 1-631-938-8127

 45-1 Ramsey Road, Shirley, NY 11967, USA



SAMTDMPTTEEVTDIVEMREENE

**Applications**

Enzyme-linked Immunoabsorbent Assay; Western Blot (Recombinant protein); Antibody Production; Protein Array

**Notes**

Best use within three months from the date of receipt of this protein.

**Storage**

Store at -80 centigrade. Aliquot to avoid repeated freezing and thawing.

**Storage Buffer**

50 mM Tris-HCl, 10 mM reduced Glutathione, pH=8.0 in the elution buffer.

**GENE INFORMATION**

**Gene Name**

[ANKH ankylosis, progressive homolog \(mouse\) \[ Homo sapiens \]](#)

**Official Symbol**

[ANKH](#)

**Synonyms**

ANKH; ankylosis, progressive homolog (mouse); ankylosis, progressive (mouse) homolog , CCAL2, CMDJ, craniometaphyseal dysplasia, Jackson type (dominant); progressive ankylosis protein homolog; ANK; CPPDD; HANK; CMDJ; MANK; CCAL2; FLJ27166;

**Gene ID**

[56172](#)

**mRNA Refseq**

[NM\\_054027](#)

**Protein Refseq**

[NP\\_473368](#)

**MIM**

[605145](#)

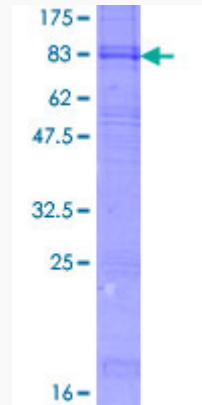
**UniProt ID**

[Q9HCJ1](#)

Tel: 1-631-559-9269 1-516-512-3133

Email: [info@creative-biomart.com](mailto:info@creative-biomart.com) Fax: 1-631-938-8127

45-1 Ramsey Road, Shirley, NY 11967, USA



12.5% SDS-PAGE Stained with Coomassie Blue.

 Tel: 1-631-559-9269 1-516-512-3133

 Email: [info@creative-biomart.com](mailto:info@creative-biomart.com)  Fax: 1-631-938-8127

 45-1 Ramsey Road, Shirley, NY 11967, USA