

Recombinant Human ANKRD15 protein, GST-tagged

Cat. No. ANKRD15-576H **Lot. No.** (See product label)

SPECIFICATION

Product Overview	Human ANKRD15 partial ORF (AAH38116, 701 a.a. - 800 a.a.) recombinant protein with GST-tag at N-terminal.
Species	Human
Source	Wheat Germ
Description	<p>The protein encoded by this gene belongs to the Kank family of proteins, which contain multiple ankyrin repeat domains. This family member functions in cytoskeleton formation by regulating actin polymerization. This gene is a candidate tumor suppressor for renal cell carcinoma. Mutations in this gene cause cerebral palsy spastic quadriplegic type 2, a central nervous system development disorder. A t(5;9) translocation results in fusion of the platelet-derived growth factor receptor beta gene (PDGFRB) on chromosome 5 with this gene in a myeloproliferative neoplasm featuring severe thrombocytopenia. Alternative splicing of this gene results in multiple transcript variants. A related pseudogene has been identified on chromosome 20. [provided by RefSeq, Dec 2014]</p>
Molecular Mass	36.63 kDa
AA Sequence	MGSLNSQLISTLSSINSVMKSASTEELRNPDFQKTSLGKITGNYLGYTCKCGGLQSG SPLSSQTSQPEQEVGTSEGKPISSLDAPPTQEGTLSPVNLTD
Applications	Enzyme-linked Immunoabsorbent Assay; Western Blot (Recombinant protein); Antibody Production; Protein Array

 Tel: 1-631-559-9269 1-516-512-3133

 Email: info@creative-biomart.com  Fax: 1-631-938-8127

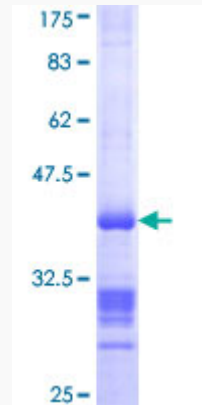
 45-1 Ramsey Road, Shirley, NY 11967, USA

Notes	Best use within three months from the date of receipt of this protein.
Storage	Store at -80 centigrade. Aliquot to avoid repeated freezing and thawing.
Storage Buffer	50 mM Tris-HCl, 10 mM reduced Glutathione, pH=8.0 in the elution buffer.
GENE INFORMATION	
Gene Name	KANK1 KN motif and ankyrin repeat domains 1 [Homo sapiens (human)]
Official Symbol	KANK1
Synonyms	KANK1; KN motif and ankyrin repeat domains 1; KANK; CPSQ2; ANKRD15; KN motif and ankyrin repeat domain-containing protein 1; ankyrin repeat domain-containing protein 15; kidney ankyrin repeat-containing protein
Gene ID	23189
mRNA Refseq	NM_001256876
Protein Refseq	NP_001243805
MIM	607704
UniProt ID	Q14678

 Tel: 1-631-559-9269 1-516-512-3133

 Email: info@creative-biomart.com  Fax: 1-631-938-8127

 45-1 Ramsey Road, Shirley, NY 11967, USA



12.5% SDS-PAGE Stained with Coomassie Blue.

 Tel: 1-631-559-9269 1-516-512-3133

 Email: info@creative-biomart.com  Fax: 1-631-938-8127

 45-1 Ramsey Road, Shirley, NY 11967, USA