

Recombinant Human ANO1 Protein, Met1-Ala333, N-His tagged

Cat. No. ANO1-12H **Lot. No.** (See product label)

SPECIFICATION

Product Overview	Purified recombinant protein of Human anoctamin 1, calcium activated chloride channel (ANO1), transcript variant 1, Met1-Ala333, with N-terminal His tag, expressed in E.coli.
Species	Human
Source	E.coli
ProteinLength	Met1-Ala333
Description	Enables calcium activated cation channel activity; intracellular calcium activated chloride channel activity; and iodide transmembrane transporter activity. Involved in cation transport; inorganic anion transport; and positive regulation of insulin secretion involved in cellular response to glucose stimulus. Located in apical plasma membrane and nucleoplasm.
Molecular Mass	38.5 kDa
Purity	> 80% as determined by SDS-PAGE and Coomassie blue staining
Notes	For testing in cell culture applications, please filter before use. Note that you may experience some loss of protein during the filtration process.
Stability	Stable for 12 months from the date of receipt of the product under proper storage and handling conditions. Avoid repeated freeze-thaw cycles.

 Tel: 1-631-559-9269 1-516-512-3133

 Email: info@creative-biomart.com  Fax: 1-631-938-8127

 45-1 Ramsey Road, Shirley, NY 11967, USA

Storage	Store at -80 centigrade after receiving vials.
Concentration	> 0.05 µg/µL as determined by microplate BCA method
Storage Buffer	50 mM Tris-HCl, pH 8.0, 8 M urea
GENE INFORMATION	
Gene Name	ANO1 anoctamin 1 [Homo sapiens (human)]
Official Symbol	ANO1
Synonyms	ANO1; anoctamin 1; DOG1; INDMS; MYMY7; TAOS2; ORAOV2; TMEM16A; anoctamin-1; Ca ²⁺ -activated Cl ⁻ channel; anoctamin 1, calcium activated chloride channel; calcium activated chloride channel; discovered on gastrointestinal stromal tumors protein 1; oral cancer overexpressed 2; transmembrane protein 16A (eight membrane-spanning domains); tumor-amplified and overexpressed sequence 2
Gene ID	55107
mRNA Refseq	NM_018043
Protein Refseq	NP_060513
MIM	610108
UniProt ID	Q5XXA6

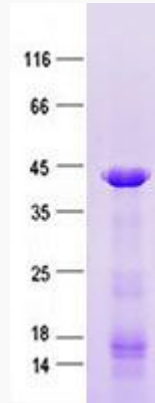
 Tel: 1-631-559-9269 1-516-512-3133

 Email: info@creative-biomart.com  Fax: 1-631-938-8127

 45-1 Ramsey Road, Shirley, NY 11967, USA



SDS-PAGE



Tel: 1-631-559-9269 1-516-512-3133

Email: info@creative-biomart.com Fax: 1-631-938-8127

45-1 Ramsey Road, Shirley, NY 11967, USA