

Recombinant Human ANO1 protein, His&Myc-tagged

Cat. No. ANO1-4534H Lot. No. (See product label)

SPECIFICATION

Product Overview	Recombinant Human ANO1 protein(Q5XXA6)(806-892aa), fused with N-terminal His tag and C-terminal Myc tag, was expressed in E.coli.
Species	Human
Source	E.coli
ProteinLength	806-892aa
Form	If the delivery form is liquid, the default storage buffer is Tris/PBS-based buffer, 5%-50% glycerol. If the delivery form is lyophilized powder, the buffer before lyophilization is Tris/PBS-based buffer, 6% Trehalose, pH 8.0.
Molecular Mass	17.6 kDa
Purity	Greater than 90% as determined by SDS-PAGE.
Storage	Store at -20°C/-80°C upon receipt, aliquoting is necessary for mutiple use. Avoid repeated freeze-thaw cycles.
Reconstitution	We recommend that this vial be briefly centrifuged prior to opening to bring the contents to the bottom. Please reconstitute protein in deionized sterile water to a concentration of 0.1-1.0 mg/mL. We recommend to add 5-50% of glycerol (final concentration) and aliquot for long-term storage at -20°C/-80°C.

 Tel: 1-631-559-9269 1-516-512-3133

 Email: info@creative-biomart.com  Fax: 1-631-938-8127

 45-1 Ramsey Road, Shirley, NY 11967, USA

AA Sequence SFTSDFIPRLVYLYMYSKNGTMHGFVNHTLSSFNVSDFQNGTAPNDPLDLGYEVQIC
RYKDYREPPWSENKYDISKDFWAVLAARLA

GENE INFORMATION

Gene Name [ANO1 anoctamin 1, calcium activated chloride channel \[Homo sapiens \]](#)

Official Symbol [ANO1](#)

Synonyms ANO1; anoctamin 1, calcium activated chloride channel; oral cancer overexpressed 2 , ORAOV2, TMEM16A, transmembrane protein 16A; anoctamin-1; DOG1; FLJ10261; TAOS2; oral cancer overexpressed 2; tumor-amplified and overexpressed sequence 2; discovered on gastrointestinal stromal tumors protein 1; transmembrane protein 16A (eight membrane-spanning domains); ORAOV2; TMEM16A;

Gene ID [55107](#)

mRNA Refseq [NM_018043](#)

Protein Refseq [NP_060513](#)

MIM [610108](#)

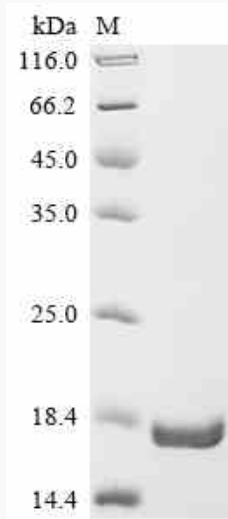
UniProt ID [Q5XXA6](#)

 Tel: 1-631-559-9269 1-516-512-3133

 Email: info@creative-biomart.com  Fax: 1-631-938-8127

 45-1 Ramsey Road, Shirley, NY 11967, USA

SDS-PAGE



 Tel: 1-631-559-9269 1-516-512-3133

 Email: info@creative-biomart.com  Fax: 1-631-938-8127

 45-1 Ramsey Road, Shirley, NY 11967, USA