

Recombinant Human ANP32A Protein, Myc/DDK-tagged, C13 and N15-labeled

Cat. No. ANP32A-5466H **Lot. No.** (See product label)

SPECIFICATION

Product Overview	ANP32A MS Standard C13 and N15-labeled recombinant protein (NP_006296) with a C-terminal MYC/DDK tag, was expressed in HEK293 cells.
Species	Human
Source	HEK293
Description	ANP32A (Acidic Nuclear Phosphoprotein 32 Family Member A) is a Protein Coding gene. Diseases associated with ANP32A include Spinocerebellar Ataxia 1 and Primary Cerebellar Degeneration. Among its related pathways are Granzyme-A Pathway and Granzyme Pathway. An important paralog of this gene is ANP32B.
Molecular Mass	28.6 kDa
AA Sequence	MEMGRRIHLELRNRTPSDVKELVLDNSRSNEGKLEGLTDEFEELEFLSTINVGLTSIA NLPKLNKLLKLELSDNRVSGGLEVLAEKCPNLTHLNLSGNKIKDLSTIEPLKKLENLKS LDFNCEVTNLNDYRENVFKLLPQLTYLDGYDRDDKEAPSDAEGYVEGLDDEEED EDEEYDEDAQVVEDEEDEDDEEEEGEEEDVSGEEEEEDEEGYNDGEVDDEEDEEEL GEEERGQKRKREPEDEGEDDDTRTRPLEQKLISEEDLAANDILDYKDDDDKV
Purity	> 80% as determined by SDS-PAGE and Coomassie blue staining
Stability	Stable for 3 months from receipt of products under proper storage and handling conditions.

 Tel: 1-631-559-9269 1-516-512-3133

 Email: info@creative-biomart.com  Fax: 1-631-938-8127

 45-1 Ramsey Road, Shirley, NY 11967, USA

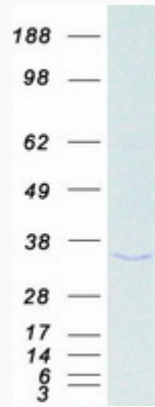
Storage	Store at -80 centigrade. Avoid repeated freeze-thaw cycles.
Concentration	50 µg/mL as determined by BCA
Storage Buffer	100 mM glycine, 25 mM Tris-HCl, pH 7.3.
GENE INFORMATION	
Gene Name	ANP32A acidic nuclear phosphoprotein 32 family member A [Homo sapiens (human)]
Official Symbol	ANP32A
Synonyms	ANP32A; acidic (leucine-rich) nuclear phosphoprotein 32 family, member A; C15orf1; acidic leucine-rich nuclear phosphoprotein 32 family member A; I1PP2A; LANP; MAPM; mapmodulin; PHAPI; PP32; hepatopietin Cn; acidic nuclear phosphoprotein pp32; leucine-rich acidic nuclear protein; putative HLA-DR-associated protein I; inhibitor-1 of protein phosphatase-2A; cerebellar leucine rich acidic nuclear protein; putative human HLA class II associated protein I; potent heat-stable protein phosphatase 2A inhibitor I1PP2A; HPPCn; PHAP1; MGC119787; MGC150373;
Gene ID	8125
mRNA Refseq	NM_006305
Protein Refseq	NP_006296
MIM	600832
UniProt ID	P39687

 Tel: 1-631-559-9269 1-516-512-3133

 Email: info@creative-biomart.com  Fax: 1-631-938-8127

 45-1 Ramsey Road, Shirley, NY 11967, USA

SDS-PAGE



 Tel: 1-631-559-9269 1-516-512-3133

 Email: info@creative-biomart.com  Fax: 1-631-938-8127

 45-1 Ramsey Road, Shirley, NY 11967, USA