

Recombinant Full Length Human ANP32B Protein, GST&His tagged

Cat. No. ANP32B-01HFL Lot. No. (See product label)

SPECIFICATION

Product Overview Purified recombinant protein of Human acidic (leucine-rich) nuclear phosphoprotein 32 family, member B (ANP32B), full length, with N-terminal GST and C-terminal His tag, expressed in E. coli.

Species Human

Source E.coli

Description Multifunctional protein working as a cell cycle progression factor as well as a cell survival factor. Required for the progression from the G1 to the S phase. Anti-apoptotic protein which functions as a caspase-3 inhibitor. Has no phosphatase 2A (PP2A) inhibitor activity (By similarity). Exhibits histone chaperone properties, stimulating core histones to assemble into a nucleosome.

Molecular Mass 56.6 kDa

Purity > 80% as determined by SDS-PAGE and Coomassie blue staining

Notes For testing in cell culture applications, please filter before use. Note that you may experience some loss of protein during the filtration process.

Stability Stable for 12 months from the date of receipt of the product under proper storage and handling conditions. Avoid repeated freeze-thaw cycles.

 Tel: 1-631-559-9269 1-516-512-3133

 Email: info@creative-biomart.com  Fax: 1-631-938-8127

 45-1 Ramsey Road, Shirley, NY 11967, USA

Storage	Store at -80 centigrade.
Storage Buffer	25 mM Tris-HCl, pH 8.0, 150 mM NaCl, 1% sarkosyl, 10% glycerol
Concentration	> 0.05 µg/µL as determined by microplate BCA method
Shipping	Dry Ice

GENE INFORMATION

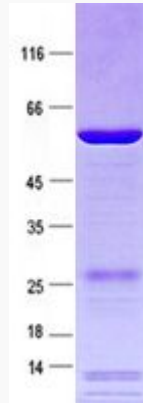
Gene Name	ANP32B acidic (leucine-rich) nuclear phosphoprotein 32 family, member B [Homo sapiens (human)]
Official Symbol	ANP32B
Synonyms	ANP32B; acidic (leucine-rich) nuclear phosphoprotein 32 family, member B; acidic leucine-rich nuclear phosphoprotein 32 family member B; acidic protein rich in leucines; APRIL; PHAPI2; SSP29; silver-stainable protein SSP29; putative HLA-DR-associated protein I-2
Gene ID	10541
mRNA Refseq	NM_006401
Protein Refseq	NP_006392
MIM	619823
UniProt ID	Q92688

 Tel: 1-631-559-9269 1-516-512-3133

 Email: info@creative-biomart.com  Fax: 1-631-938-8127

 45-1 Ramsey Road, Shirley, NY 11967, USA

SDS-PAGE



 Tel: 1-631-559-9269 1-516-512-3133

 Email: info@creative-biomart.com  Fax: 1-631-938-8127

 45-1 Ramsey Road, Shirley, NY 11967, USA